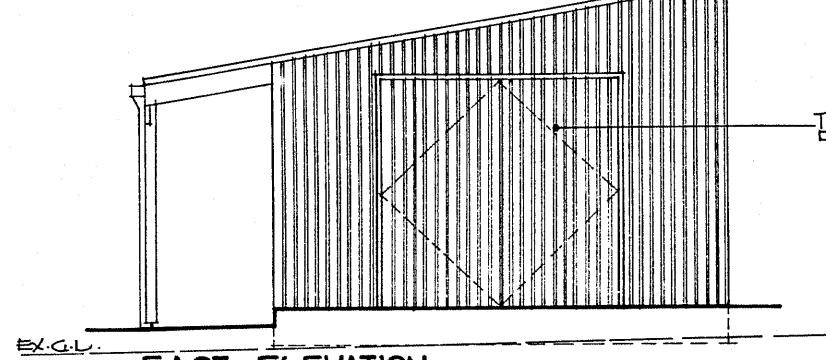
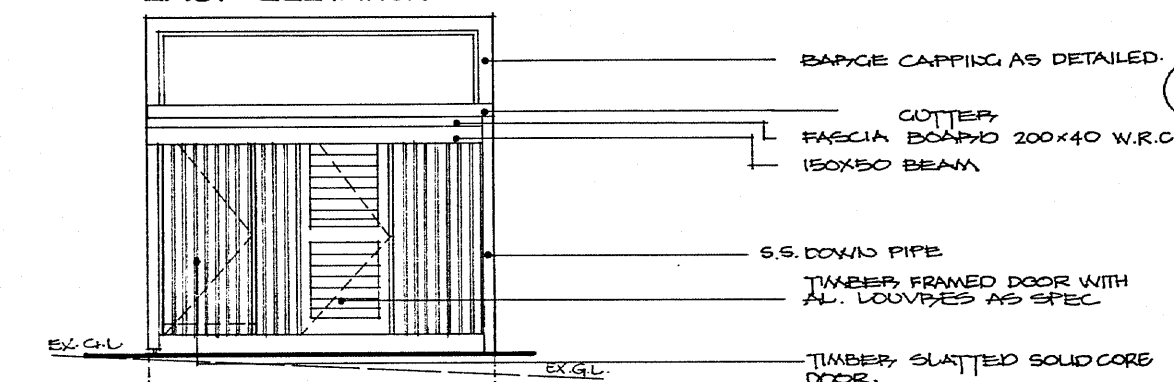


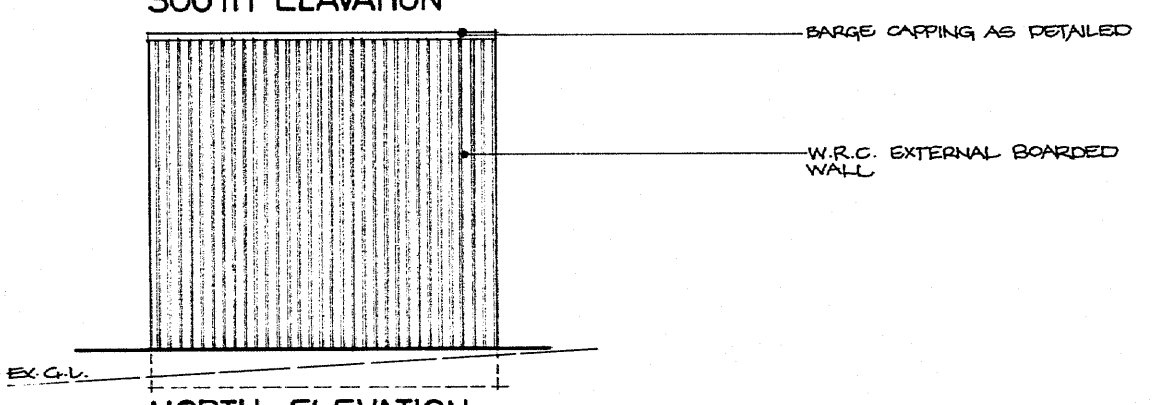
WEST ELEVATION



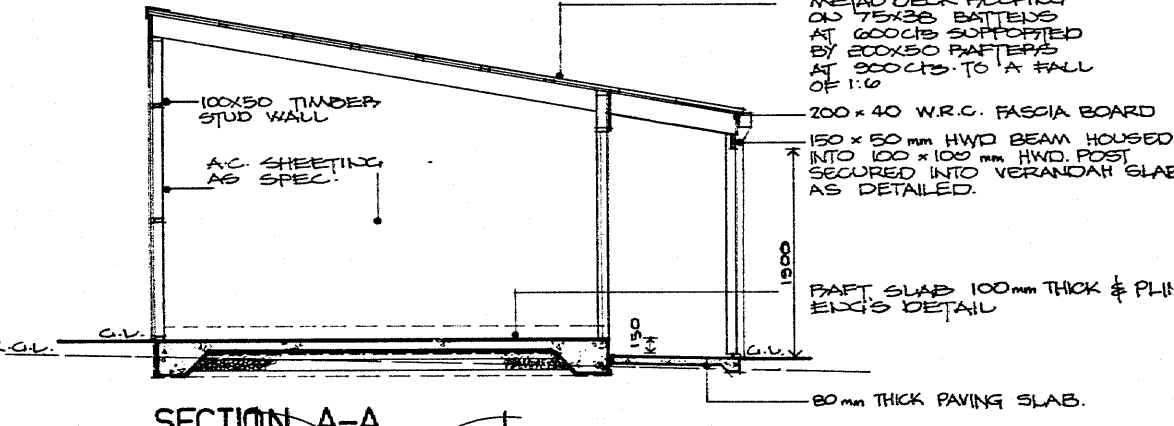
EAST ELEVATION



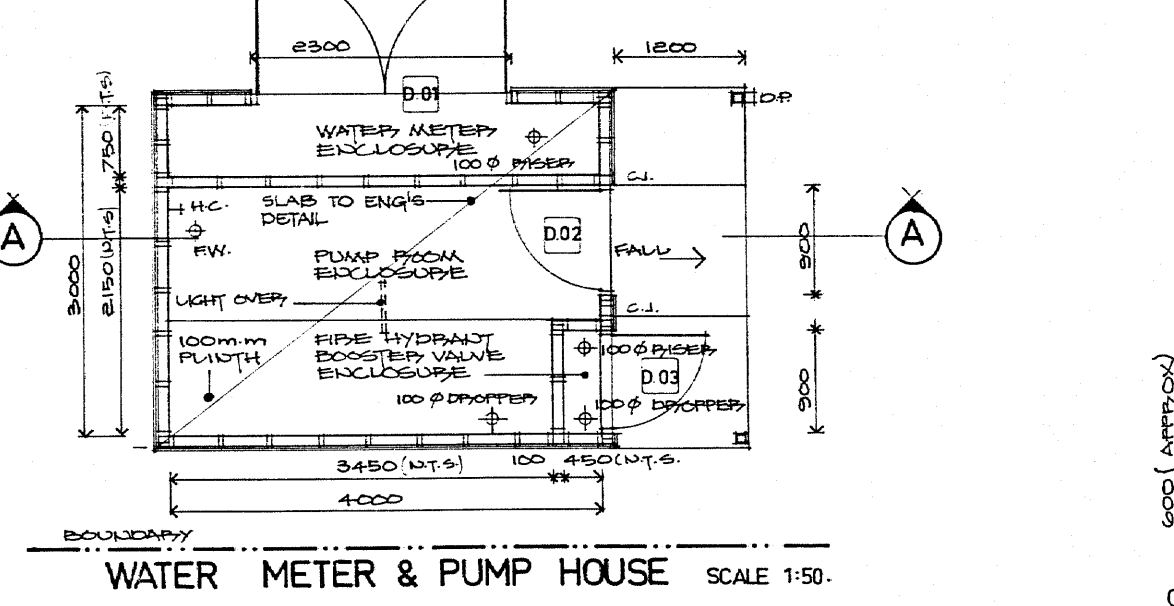
SOUTH ELEVATION



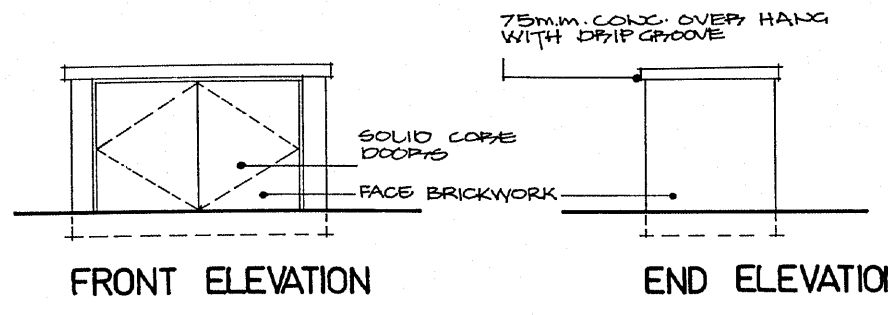
NORTH ELEVATION



SECTION A-A

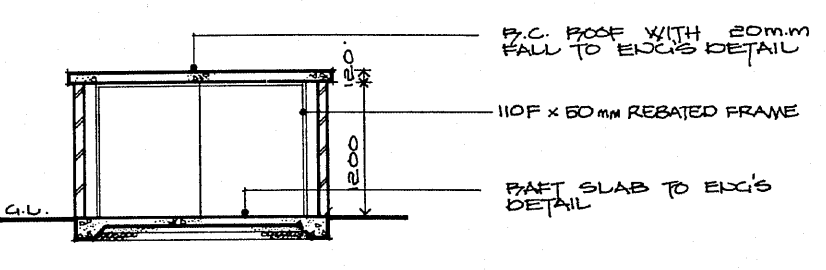


WATER METER & PUMP HOUSE SCALE 1:50

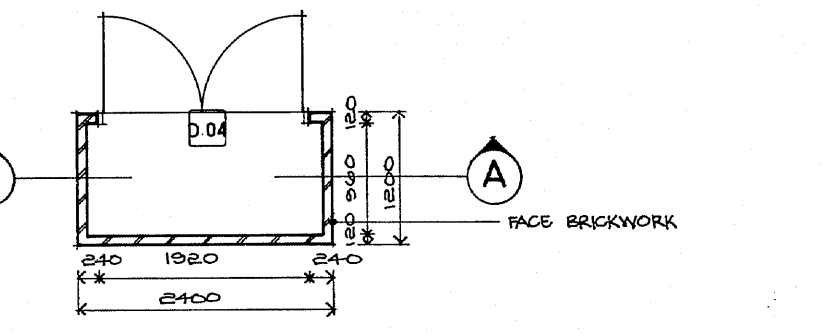


FRONT ELEVATION

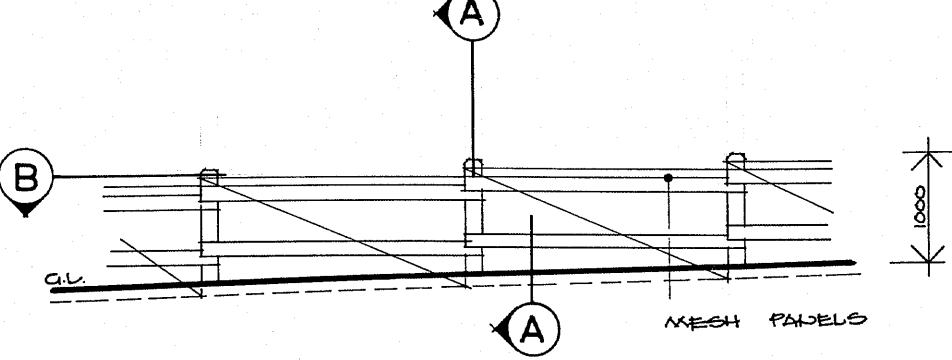
END ELEVATION



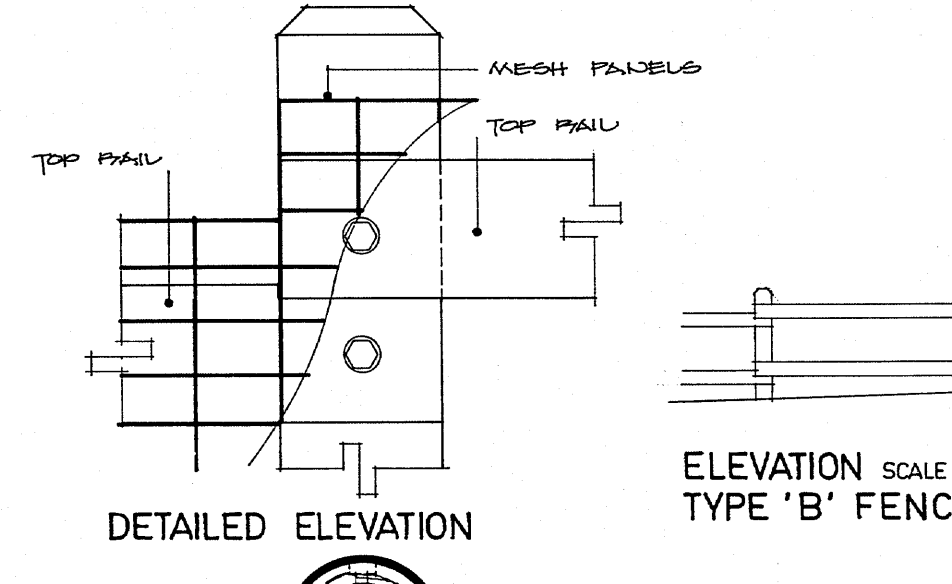
SECTION A-A



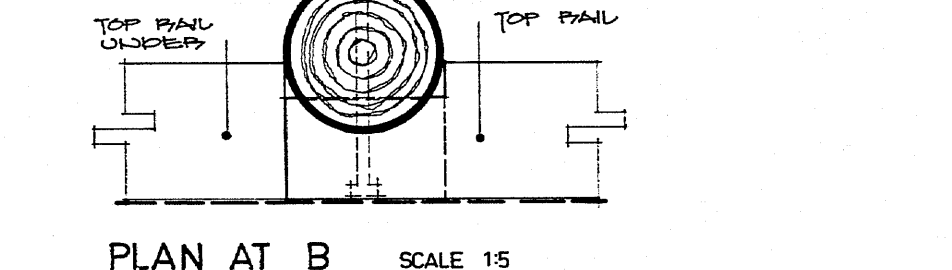
GAS METER HOUSING SCALE 1:50



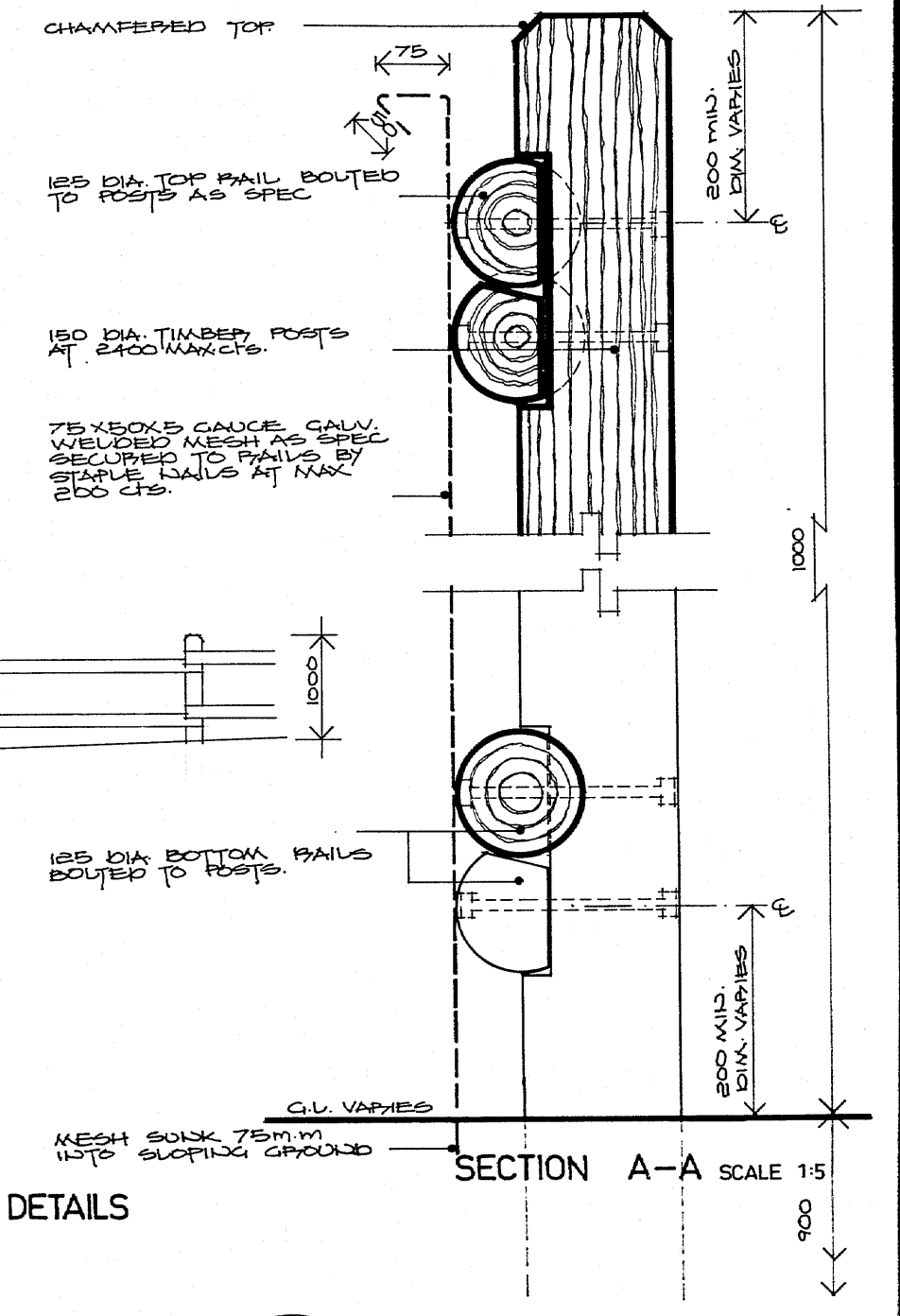
ELEVATION SCALE 1:50 TYPE 'A' FENCING



DETAILED ELEVATION

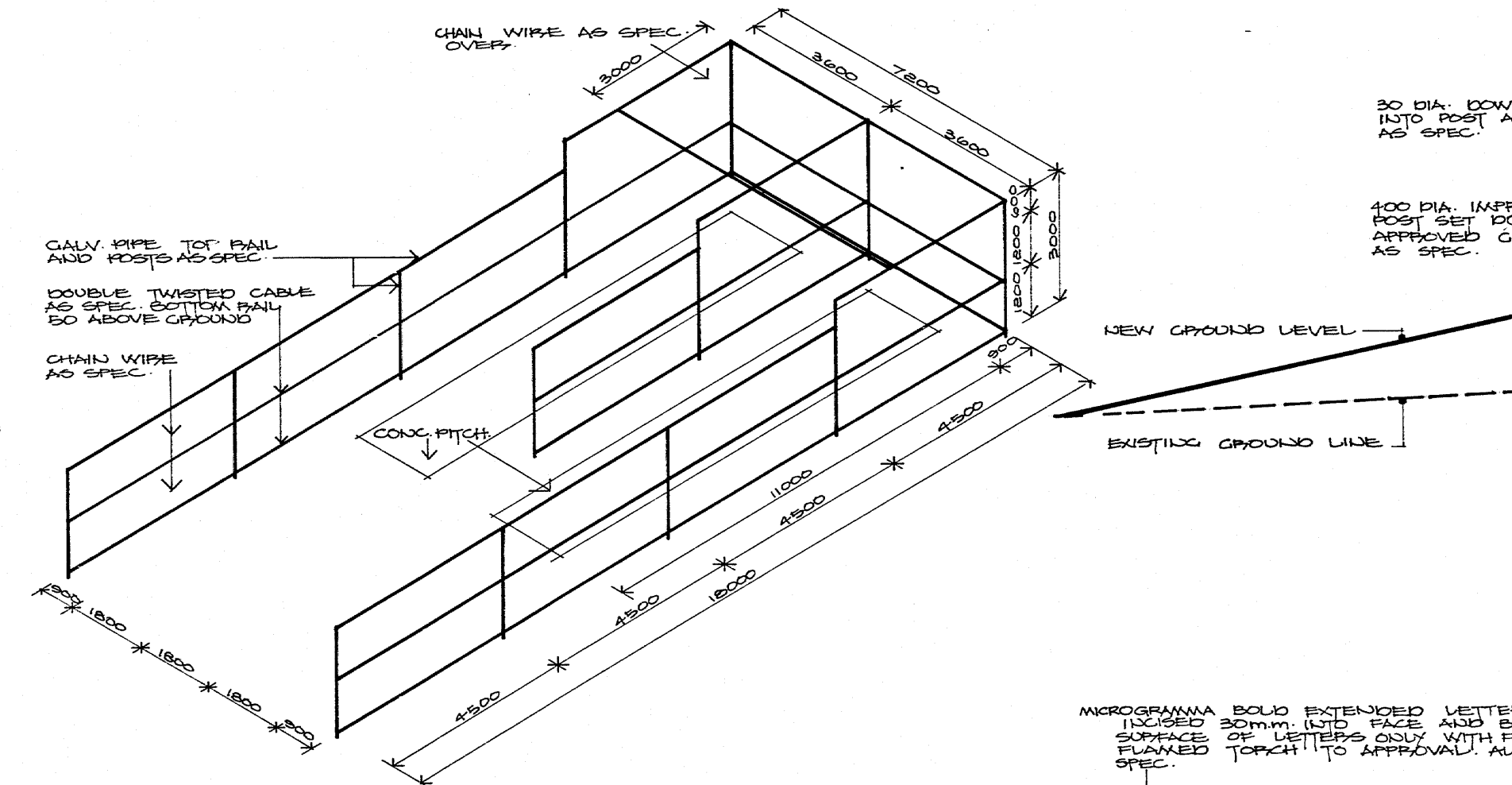


PLAN AT B SCALE 1:5

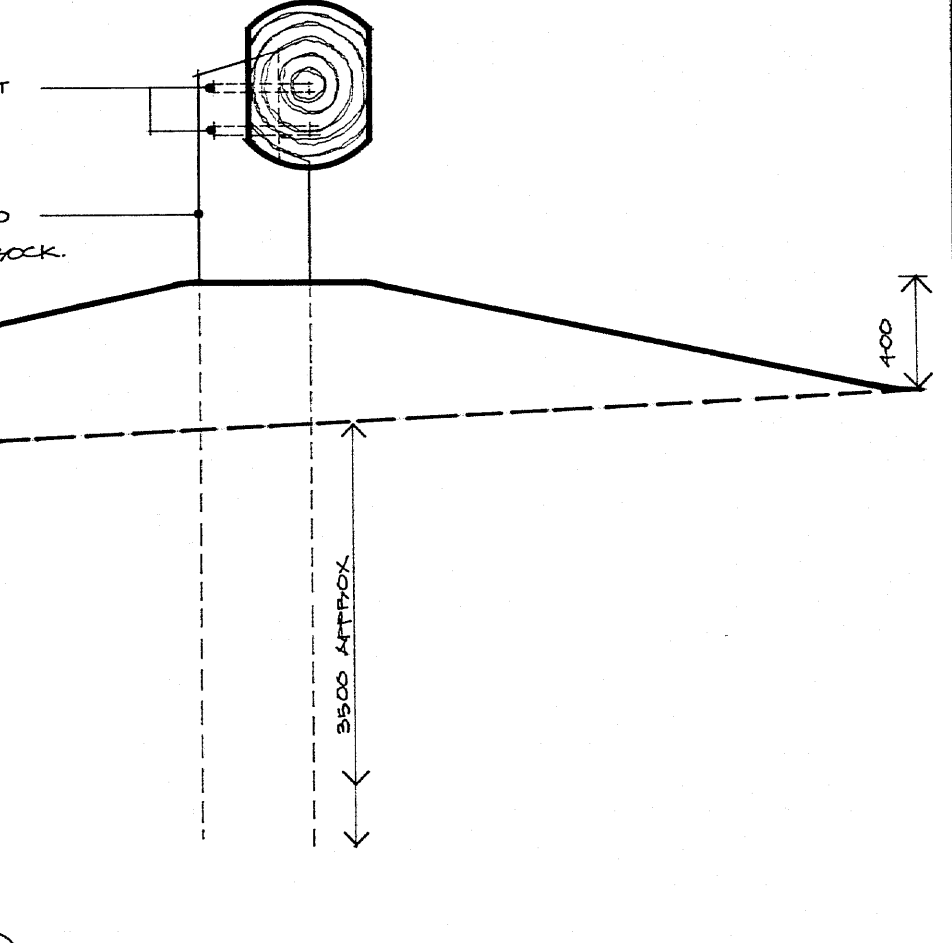


FENCING DETAILS

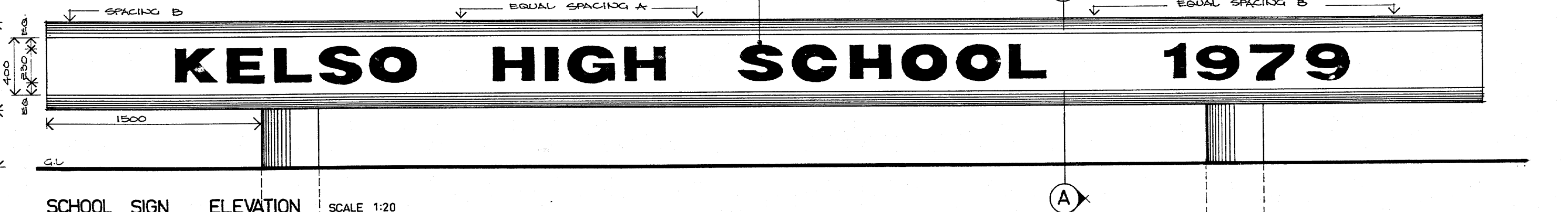
SECTION A-A SCALE 1:5



CRICKET PRACTICE ENCLOSURE & NETS SCALE 1:100



SECTION A-A SCALE 1:20



SCHOOL SIGN ELEVATION SCALE 1:20

	DEPARTMENT OF PUBLIC WORKS NEW SOUTH WALES W. K. PILZ DIRECTOR OF PUBLIC WORKS	DESIGN BY GOVERNMENT ARCHITECT CONSULTING ARCHITECT IAN REEER ASSOCIATES CONSULTING ENGINEER - STRUCTURAL BOND, JAMES LARON PTY. LTD.	CONSULTING ENGINEER - ELECTRICAL DEPARTMENT OF PUBLIC WORKS CONSULTING ENGINEER - MECHANICAL DEPARTMENT OF PUBLIC WORKS CONSULTING ENGINEER - HYDRAULIC LEDINGHAM, HENSBY & PARTNERS PTY. LTD.	<b>KELSO HIGH SCHOOL          NEW SCHOOL</b> BOYD ROAD, KELSO, BATHURST SITE DETAILS	PLAN ROOM NUMBER SB 2503/37 NUMBER IN SET 199 SHEET NUMBER 37 SCALES AS SHOWN
	C. P. WEATHERBURN GOVERNMENT ARCHITECT	6.9.76	FOLL 551		

300mm ON ORIGINAL

