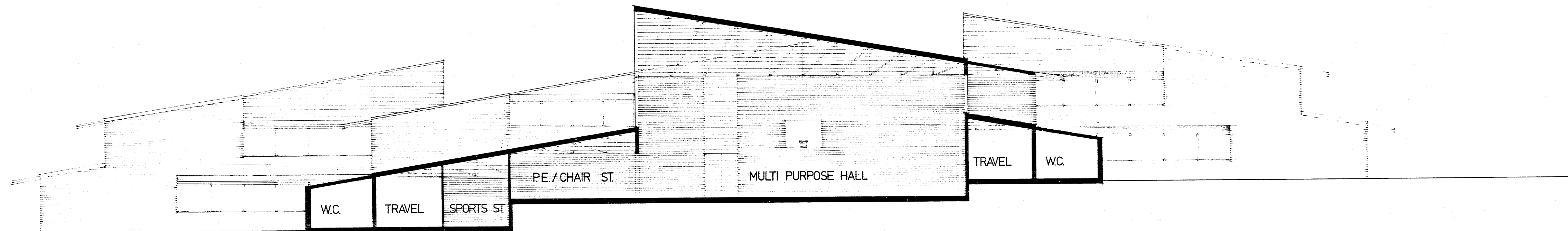
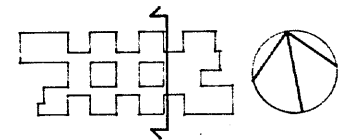
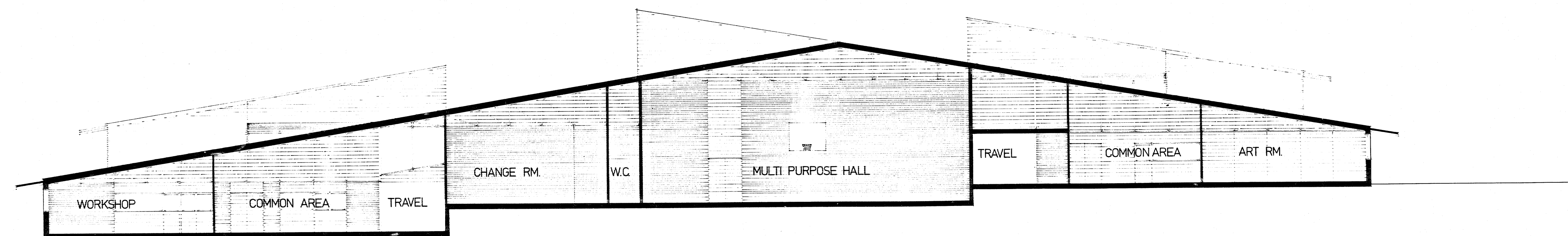
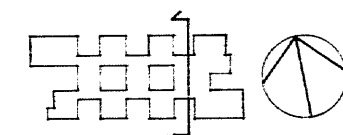


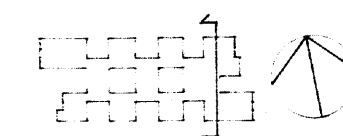
SECTION D-D



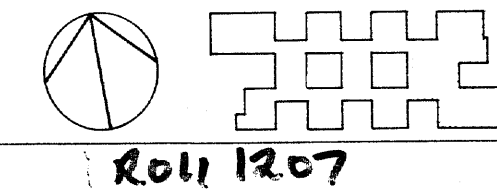
SECTION E-E



SECTION F-F



J.C. Humphrey Director of Public Works G.P. Webber Government Architect  
 NEW SOUTH WALES  
 DEPARTMENT OF PUBLIC WORKS



Roll 1207

Section	SCHOOLS	Project	KELSO HIGH SCHOOL	Number	
Project Architect	NICK VAN EXTER	Scale	1/100	NEW SCHOOL. S.P. 2503/224	9
DRG		Date	OCT '75	SECTIONS.	

300m.m. ON ORIGINAL SCALE

