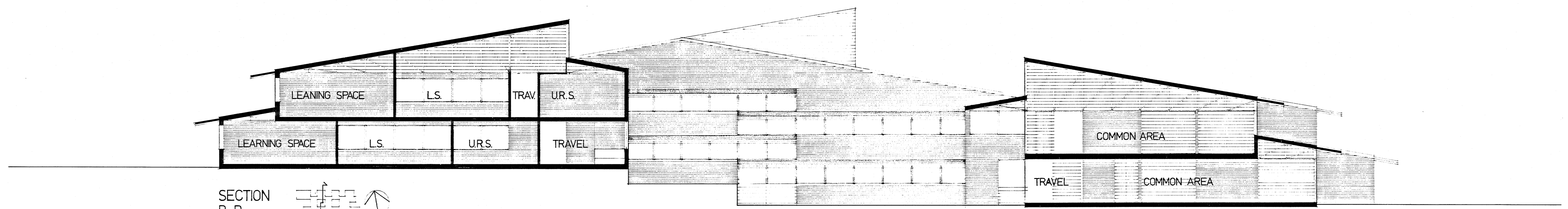
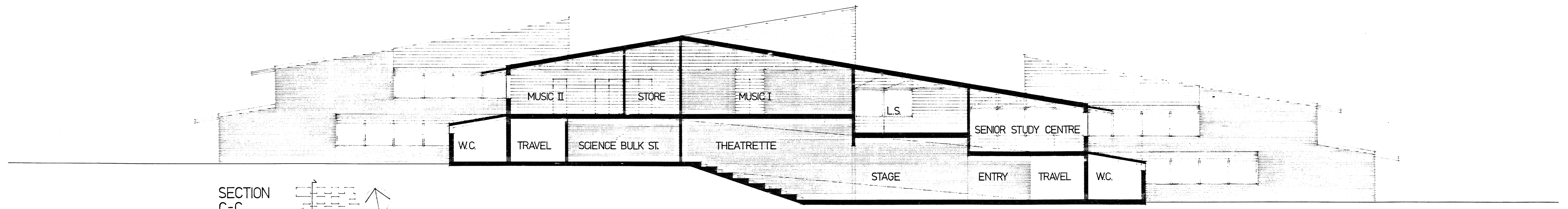


SECTION A-A

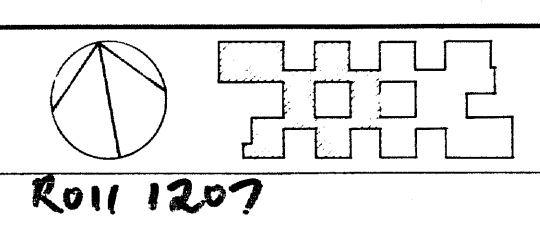


SECTION B-B



SECTION C-C

J C Humphrey Director of Public Works
 NEW SOUTH WALES
 DEPARTMENT OF PUBLIC WORKS



R011 1207

Section	SCHOOLS	Project	KELSO HIGH SCHOOL	Number
Project Architect	NICK VAN EXTER	Scale	1/100	
DRG		Date	OCT '75	
			NEW SCHOOL S.B. 2503/223	8.
			SECTIONS	

300m.m. ON ORIGINAL SCALE

