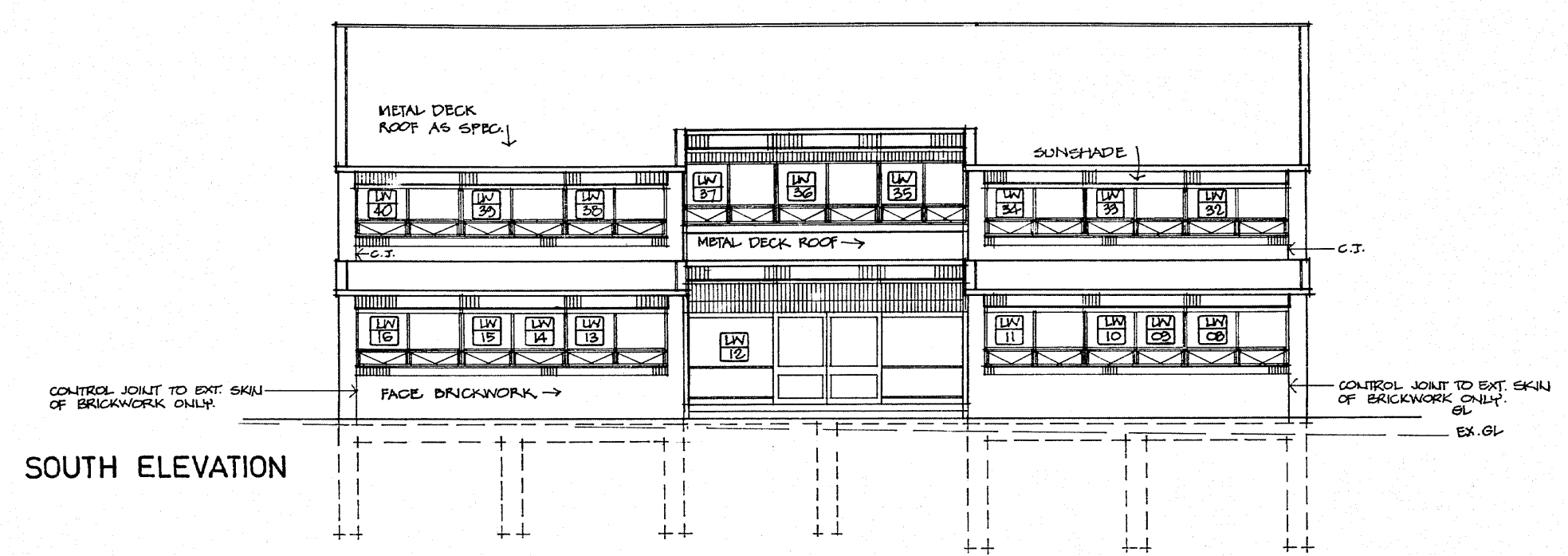
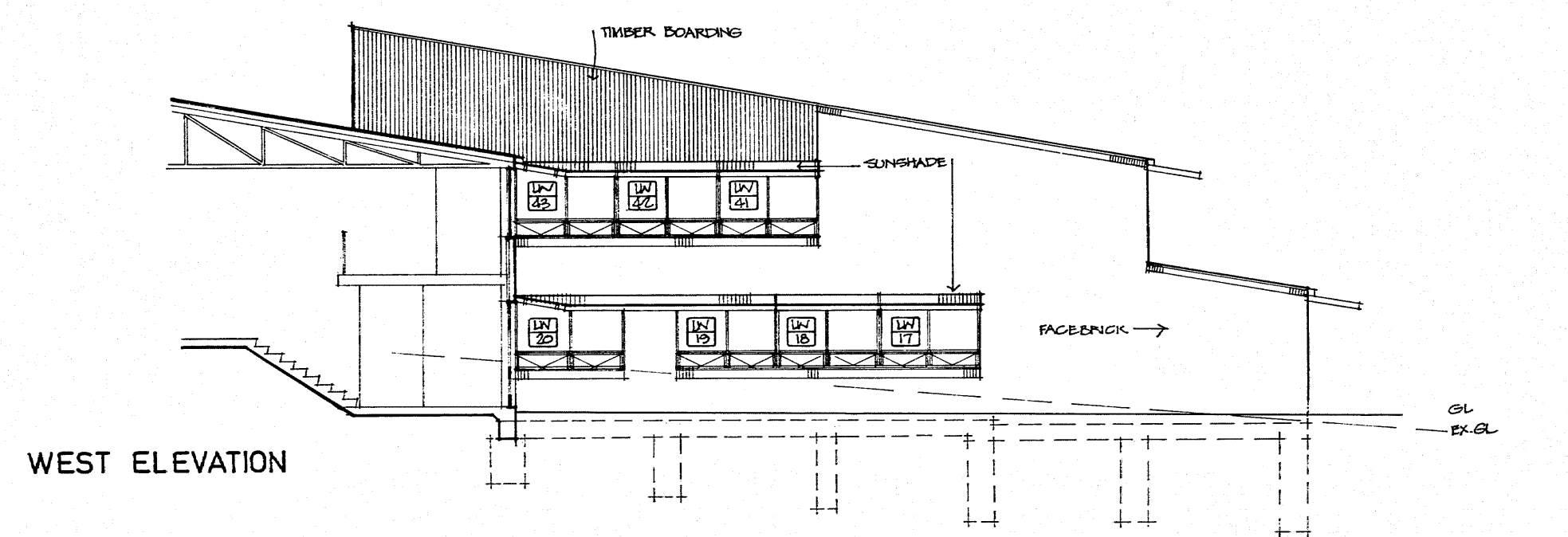


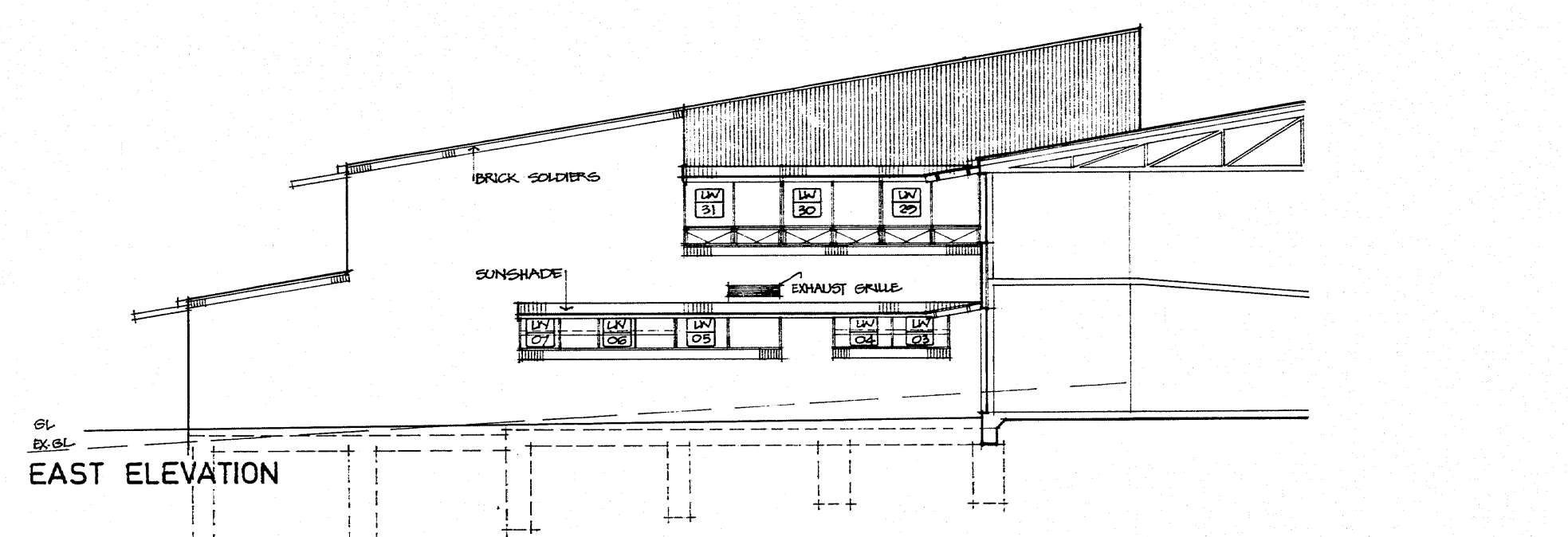
ROOF PLAN



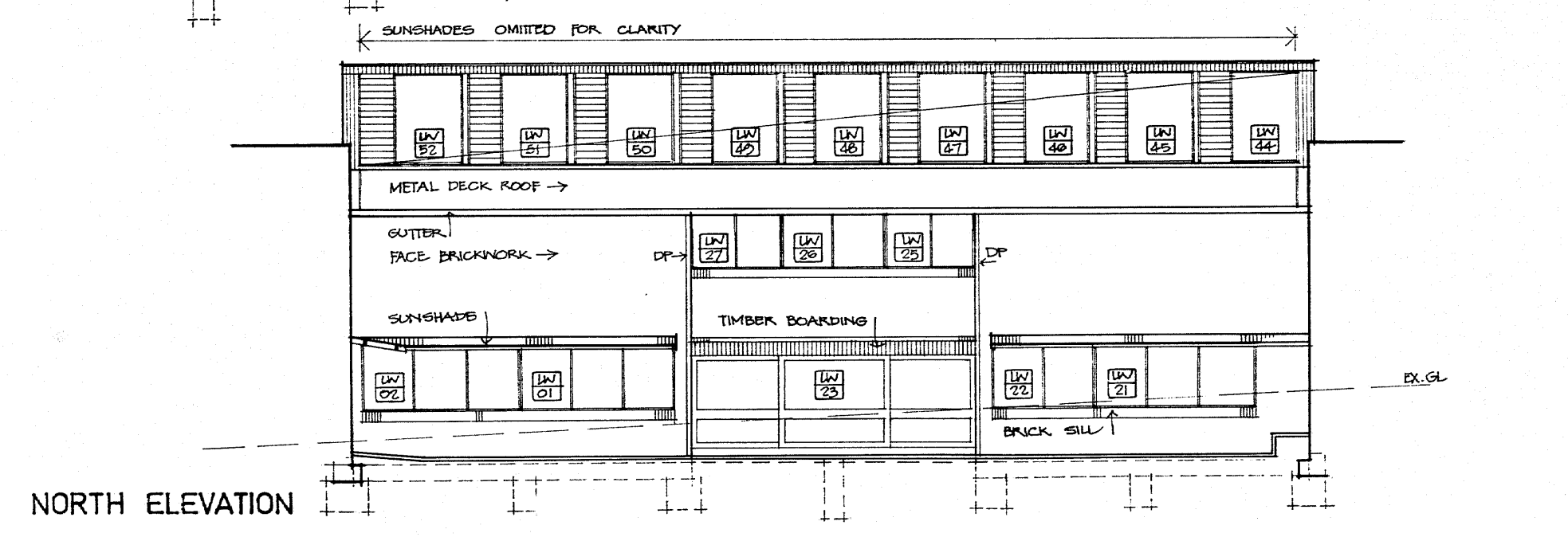
SOUTH ELEVATION



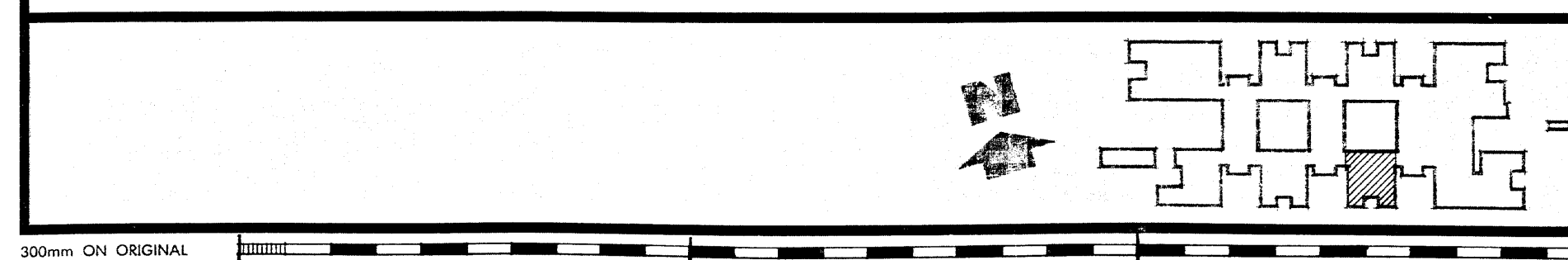
WEST ELEVATION



EAST ELEVATION



NORTH ELEVATION



DEPARTMENT OF PUBLIC WORKS
NEW SOUTH WALES
W. K. FILZ
DIRECTOR OF PUBLIC WORKS
6.9.76
C. P. WEATHERBURN
GOVERNMENT ARCHITECT

DESIGN BY GOVERNMENT ARCHITECT
CONSULTING ARCHITECT
IAN REELER ASSOCIATES
CONSULTING ENGINEER - STRUCTURAL
BOND, JAMES, LARON PTY. LTD.

CONSULTING ENGINEER - ELECTRICAL
DEPARTMENT OF PUBLIC WORKS
CONSULTING ENGINEER - MECHANICAL
DEPARTMENT OF PUBLIC WORKS
CONSULTING ENGINEER - HYDRAULIC
LEDINGHAM, HENSBY & PARTNERS PT. LTD.

**KELSO HIGH SCHOOL
NEW SCHOOL**
BOYD ROAD,
KELSO, BATHURST
BLOCK L
ROOF PLAN & ELEVATIONS

PLAN ROOM NUMBER SB2503/33
NUMBER IN SET 199
SHEET NUMBER 33
SCALE 1:100

300mm ON ORIGINAL

ROLL 551

