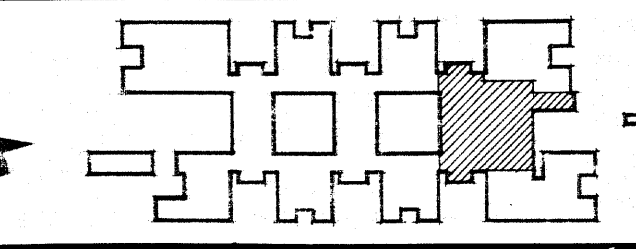


300mm ON ORIGINAL



DEPARTMENT OF PUBLIC WORKS
NEW SOUTH WALES
W. K. PILZ DIRECTOR OF PUBLIC WORKS
6.9.76
C. P. WEATHERBURN GOVERNMENT ARCHITECT

DESIGN BY GOVERNMENT ARCHITECT
CONSULTING ARCHITECT
IAN REELER ASSOCIATES
CONSULTING ENGINEER - STRUCTURAL
BOND, JAMES, LASON PTY. LTD.

CONSULTING ENGINEER - ELECTRICAL
DEPARTMENT OF PUBLIC WORKS
CONSULTING ENGINEER - MECHANICAL
DEPARTMENT OF PUBLIC WORKS
CONSULTING ENGINEER - HYDRAULIC
LEDINGHAM, HENSBY & PARTNERS PTY. LTD.

**KELSO HIGH SCHOOL
NEW SCHOOL**
BOYD ROAD,
KELSO, BATHURST
**BLOCK G
FLOOR PLAN LEVEL 1,2,3**

PLAN ROOM NUMBER	SB2503/23	
NUMBER IN SET	199	SHEET NUMBER 23
SCALES	1:100	

300 MMS ON ORIGINAL SCALE