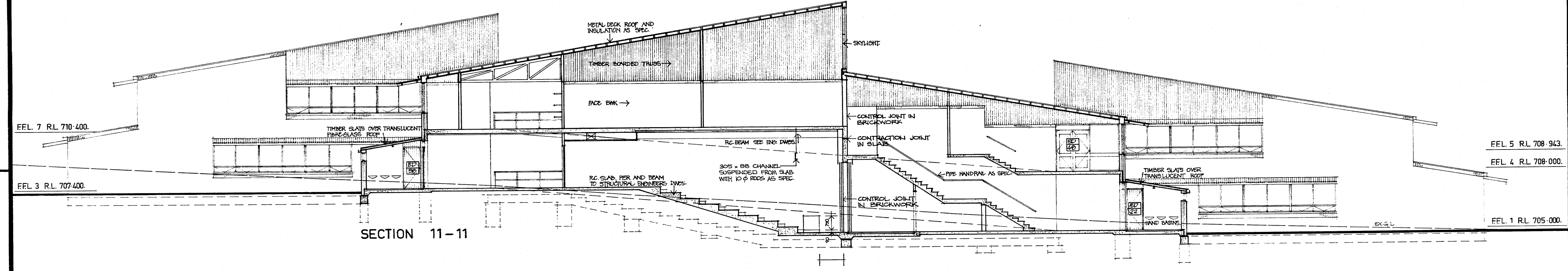
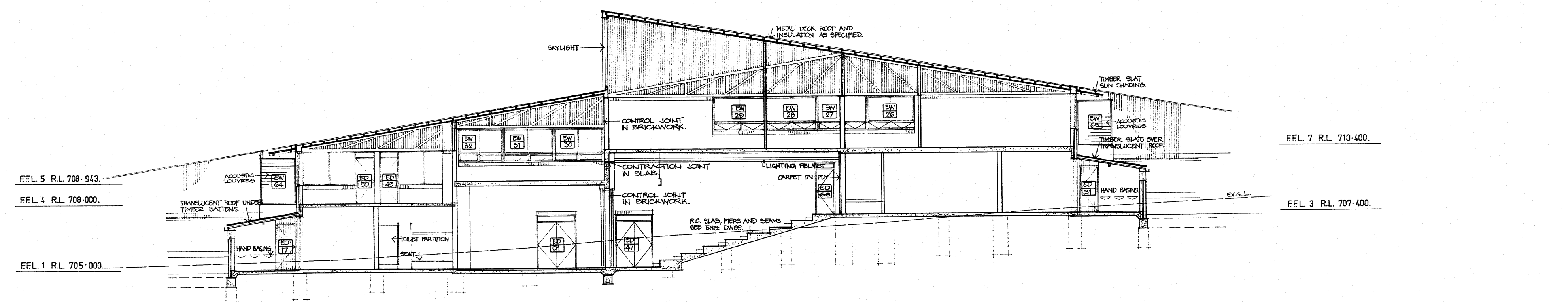


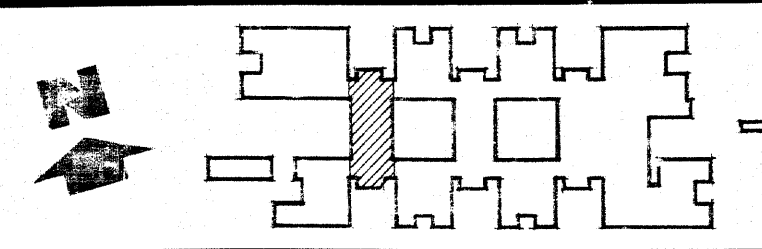
SECTION 10-10



SECTION 11-11



SECTION 12-12



DEPARTMENT OF PUBLIC WORKS NEW SOUTH WALES W. K. PILZ DIRECTOR OF PUBLIC WORKS C. P. WEATHERBURN GOVERNMENT ARCHITECT	DESIGN BY GOVERNMENT ARCHITECT CONSULTING ARCHITECT IAN REEER ASSOCIATES CONSULTING ENGINEER - STRUCTURAL BOND, JAMES, LARON PTY. LTD.	CONSULTING ENGINEER - ELECTRICAL DEPARTMENT OF PUBLIC WORKS CONSULTING ENGINEER - MECHANICAL DEPARTMENT OF PUBLIC WORKS CONSULTING ENGINEER - HYDRAULIC LEDINGHAM, HENSBY & PARTNERS PTY. LTD.	PLAN ROOM NUMBER SB2503/20
			NUMBER IN SET 199
SCALES 1:100			ROLL 551

300mm ON ORIGINAL

