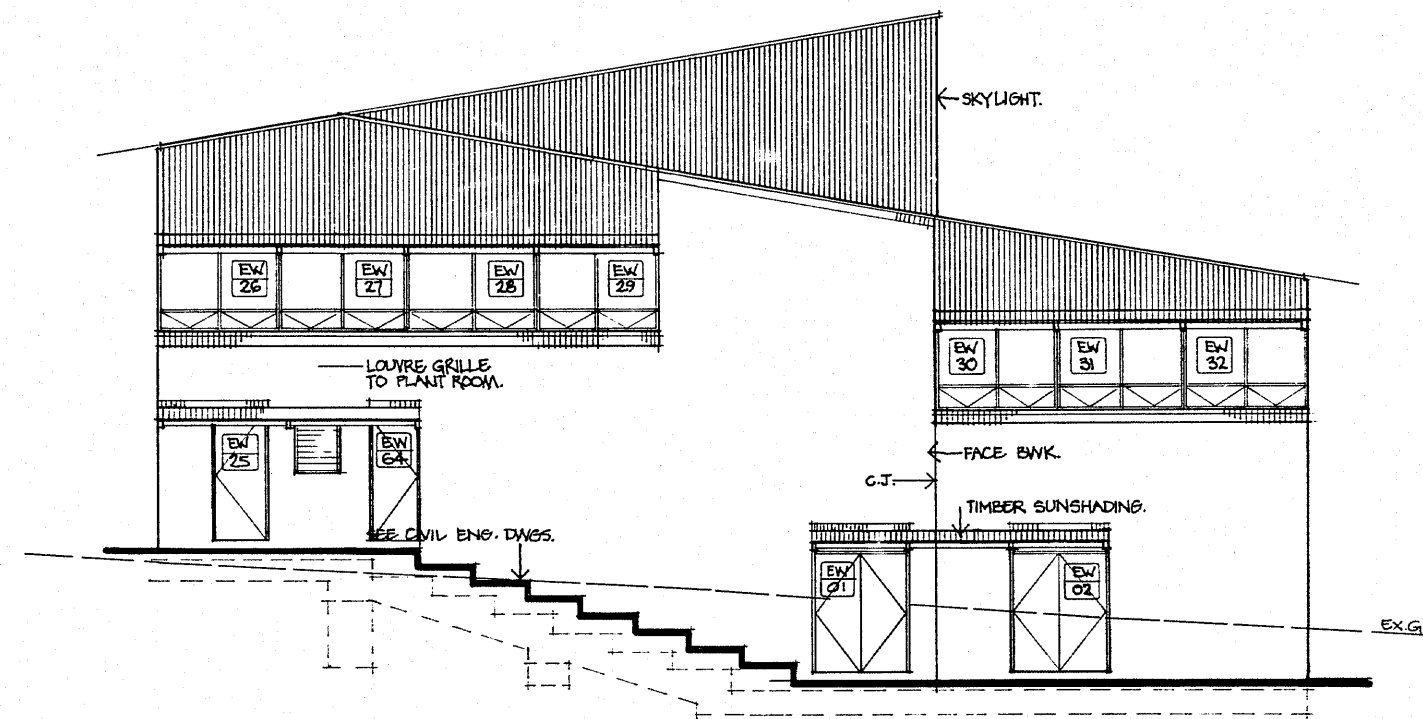
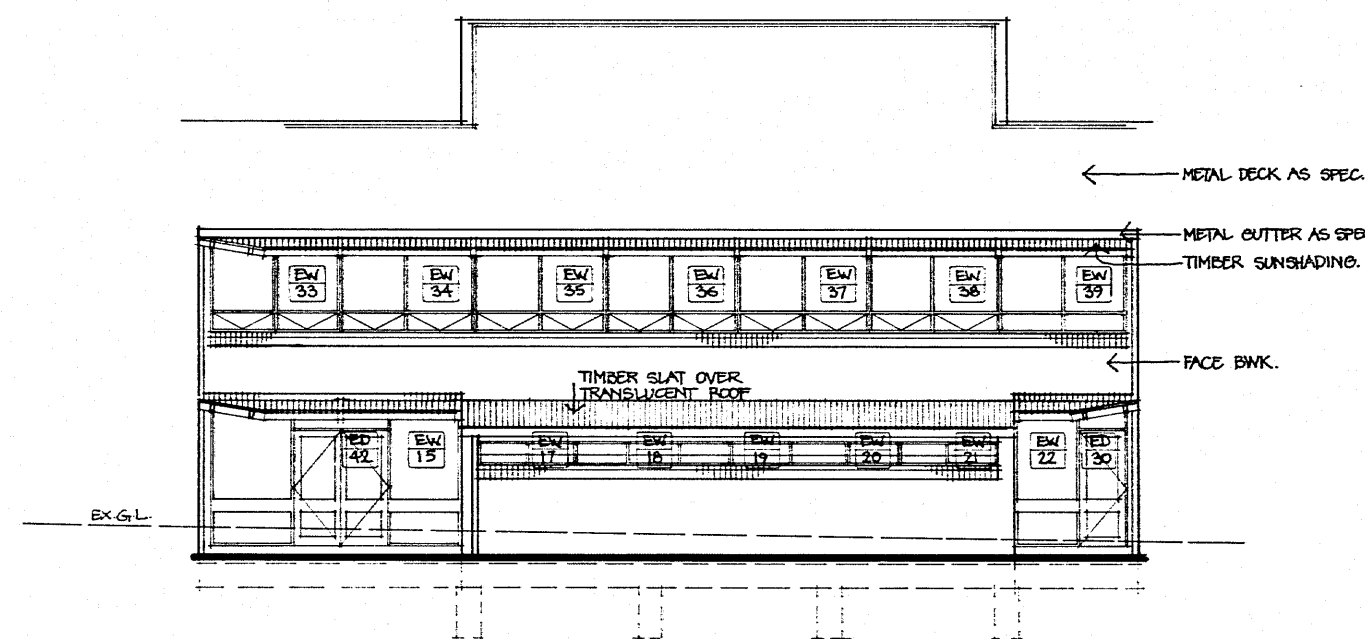


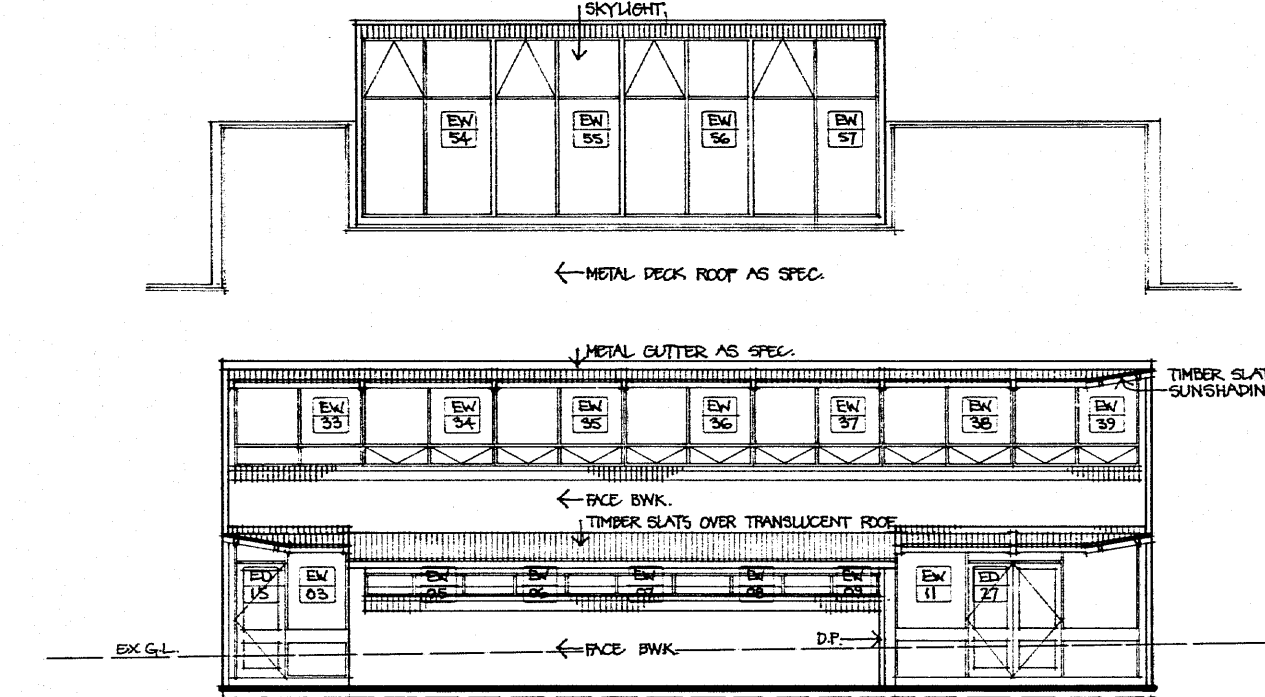
EAST ELEVATION



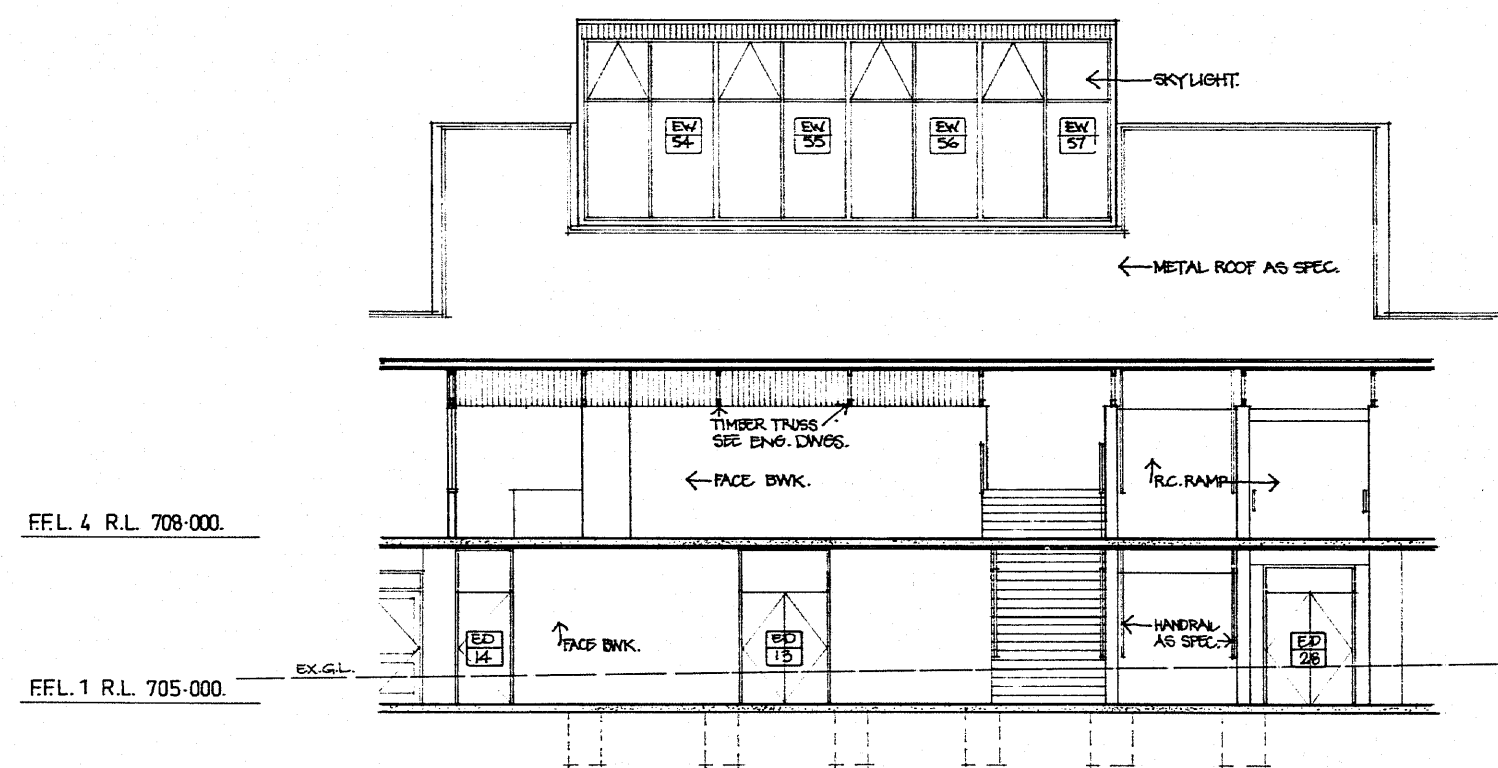
WEST ELEVATION



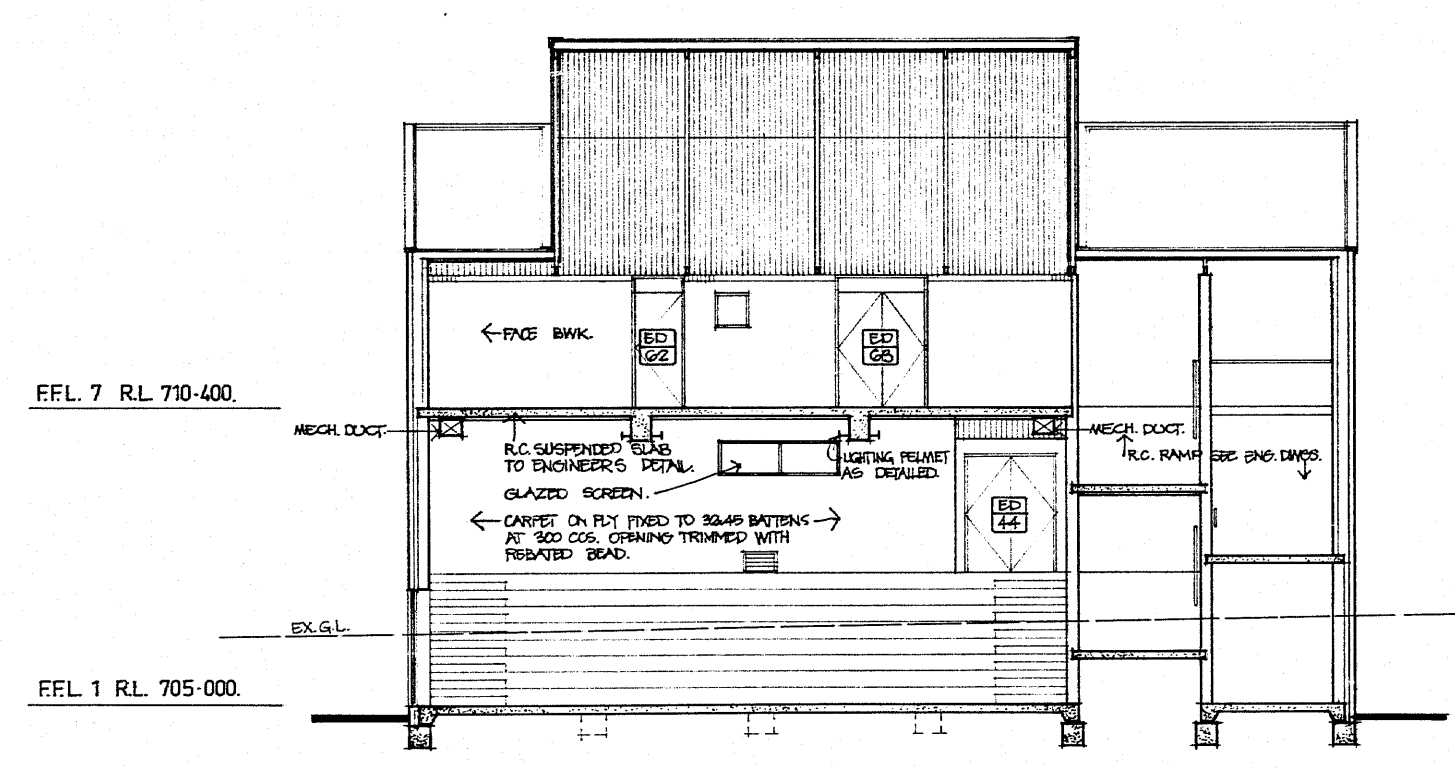
NORTH ELEVATION



SOUTH ELEVATION

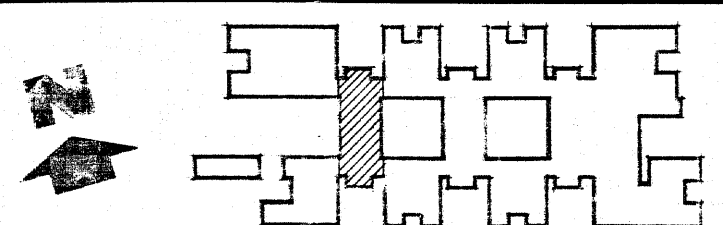


SECTION 13 - 13



SECTION 14 - 14

LEGEND:  
G.C. - GENERAL JOINT TO EXTERNAL SKIN OF BRICKWORK ONLY.



DEPARTMENT OF PUBLIC WORKS  
NEW SOUTH WALES  
W. K. PILZ DIRECTOR OF PUBLIC WORKS  
*C. P. Weatherburn*  
C. P. WEATHERBURN GOVERNMENT ARCHITECT

DESIGN BY GOVERNMENT ARCHITECT  
CONSULTING ARCHITECT  
IAN REEER ASSOCIATES  
CONSULTING ENGINEER - STRUCTURAL  
BOND, JAMES, LARON PTY. LTD.

CONSULTING ENGINEER - ELECTRICAL  
DEPARTMENT OF PUBLIC WORKS  
CONSULTING ENGINEER - MECHANICAL  
DEPARTMENT OF PUBLIC WORKS  
CONSULTING ENGINEER - HYDRAULIC  
LEDINGHAM, HENSBY & PARTNERS PTY. LTD.

**KELSO HIGH SCHOOL  
NEW SCHOOL**  
BOYD ROAD,  
KELSO, BATHURST  
**BLOCK E  
ELEVATIONS & SECTIONS**

PLAN ROOM  
NUMBER **EB2503/19**  
NUMBER  
IN SET **199** SHEET  
NUMBER **19**  
SCALE 1:100

300mm ON ORIGINAL

300 MMS ON ORIGINAL SCALE

ROLL 551