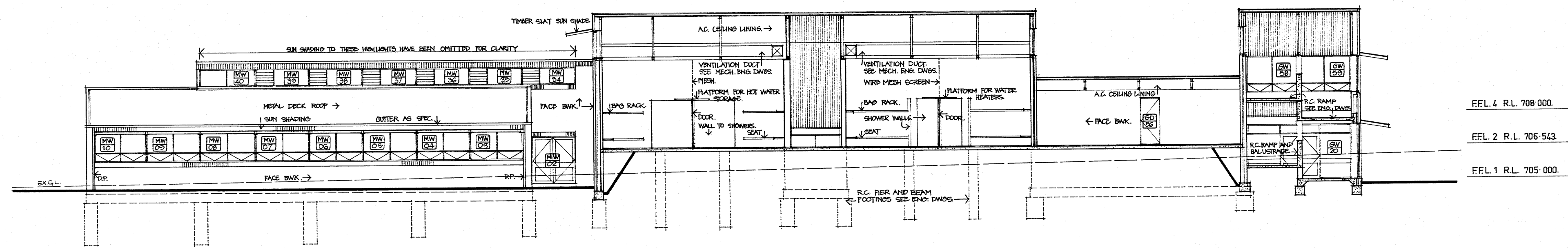
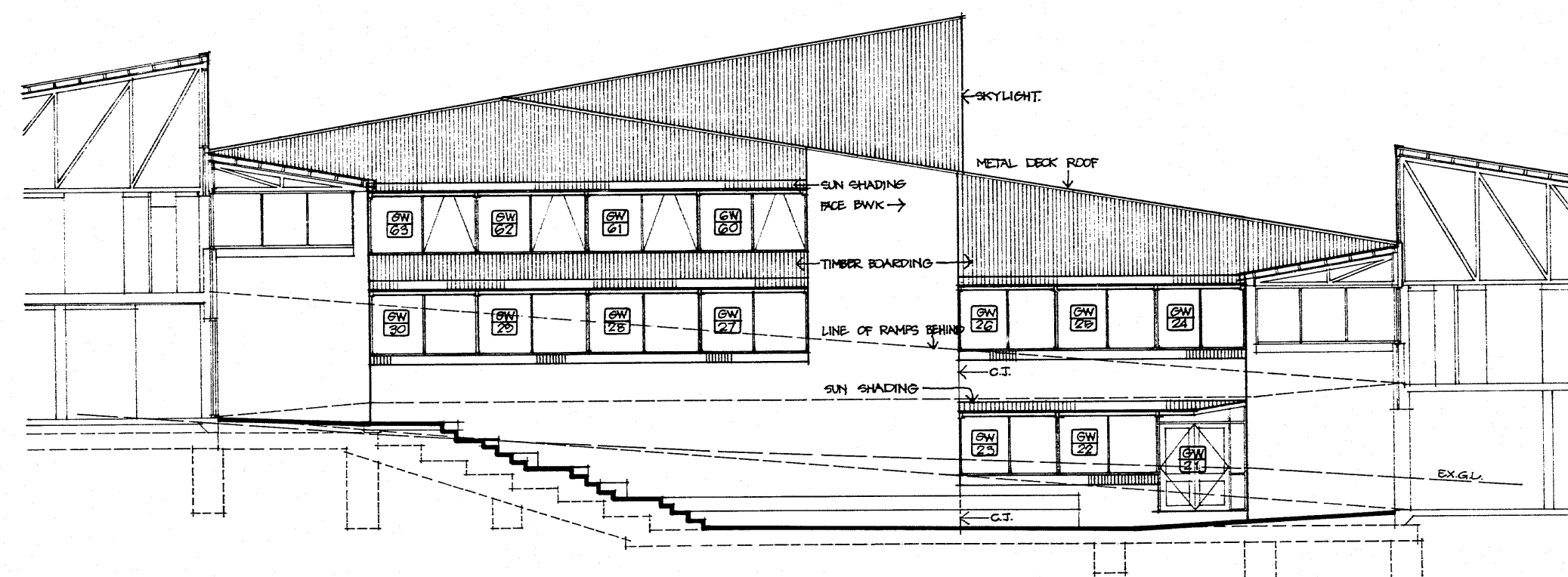


SECTION 26 - 26

SECTION 27 - 27

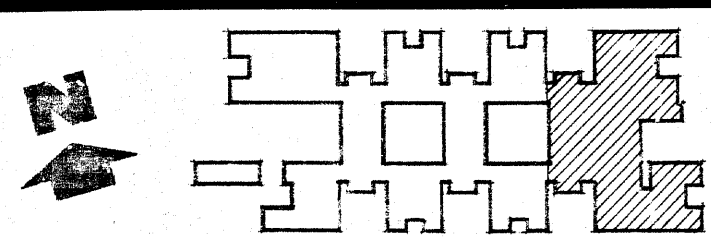


FFL 4 R.L. 708.000.  
 FFL 2 R.L. 706.543  
 FFL 1 R.L. 705.000.



SECTION 28 - 28

LEGEND:  
 C.J. : CONTIGUOUS JOINT TO EXTERNAL SKINS OF BRICKWORK ONLY.  
 W.S. : WALL STIFFENER TO ENDS DETAIL.



DEPARTMENT OF PUBLIC WORKS NEW SOUTH WALES W. K. PILZ DIRECTOR OF PUBLIC WORKS  C. P. WEATHERBURN GOVERNMENT ARCHITECT	DESIGN BY GOVERNMENT ARCHITECT  CONSULTING ARCHITECT IAN REELEY ASSOCIATES CONSULTING ENGINEER : STRUCTURAL BOND, JAMES, LARON PTY. LTD.	CONSULTING ENGINEER : ELECTRICAL DEPARTMENT OF PUBLIC WORKS	<b>KELSO HIGH SCHOOL          NEW SCHOOL</b> BOYD ROAD, KELSO, BATHURST <b>SECTIONS          BLOCKS D, G &amp; M</b>	PLAN ROOM NUMBER <b>SB 2503/16</b>	
		CONSULTING ENGINEER : MECHANICAL DEPARTMENT OF PUBLIC WORKS CONSULTING ENGINEER : HYDRAULIC LEDINGHAM, HENSBY & PARTNERS PTY. LTD.		NUMBER IN SET <b>199</b>	SHEET NUMBER <b>16</b>

300mm ON ORIGINAL

300 MMS ON ORIGINAL SCALE