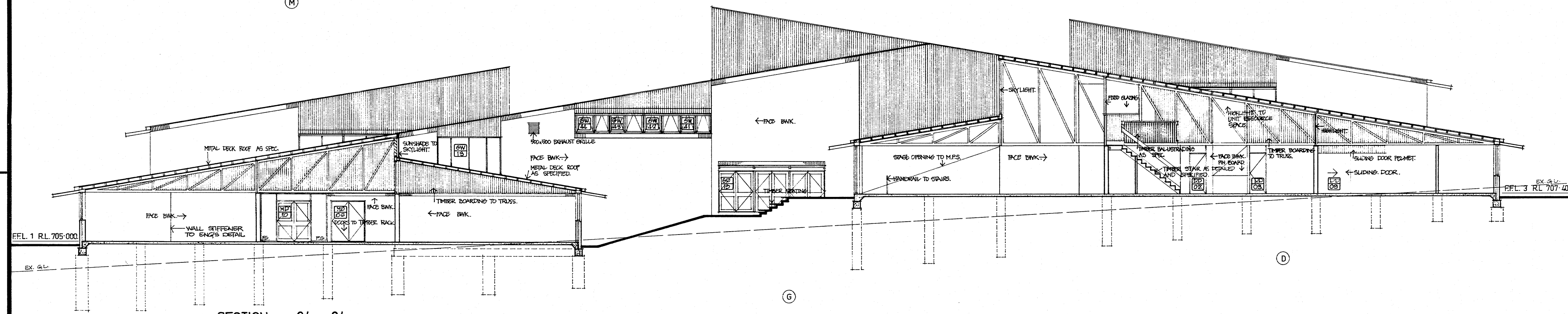
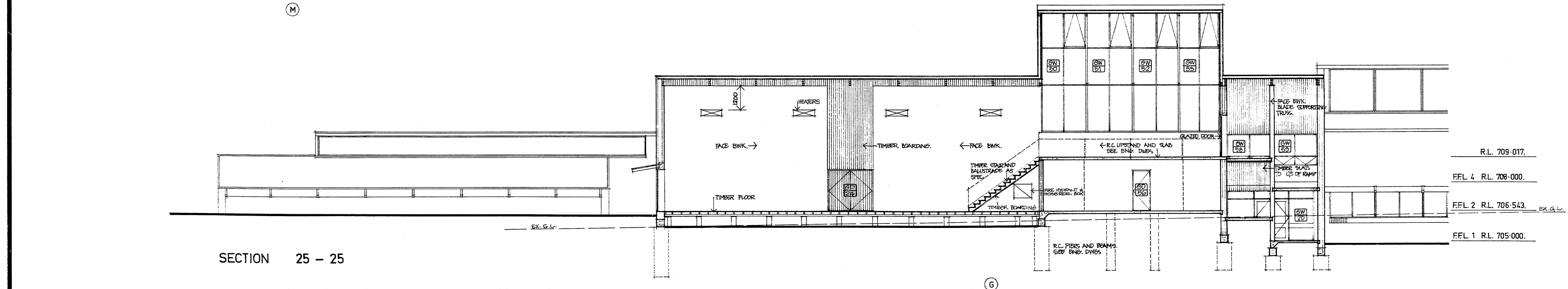


SECTION 23 - 23



SECTION 24 - 24



SECTION 25 - 25

		DEPARTMENT OF PUBLIC WORKS NEW SOUTH WALES W. K. PILZ DIRECTOR OF PUBLIC WORKS	DESIGN BY GOVERNMENT ARCHITECT CONSULTING ARCHITECT IAN REELEY ASSOCIATES	CONSULTING ENGINEER - ELECTRICAL DEPARTMENT OF PUBLIC WORKS CONSULTING ENGINEER - MECHANICAL DEPARTMENT OF PUBLIC WORKS CONSULTING ENGINEER - HYDRAULIC LEDINGHAM, HENSBY & PARTNERS PTY. LTD.	KELSO HIGH SCHOOL NEW SCHOOL BOYD ROAD, KELSO, BATHURST SECTIONS BLOCKS D, G & M	PLAN ROOM NUMBER 982503/15
		C. P. WEATHERBURN GOVERNMENT ARCHITECT	BOND, JAMES, LARON PTY. LTD.	NUMBER IN SET 199 SHEET NUMBER 15 SCALES 1:100		

300mm ON ORIGINAL

ROLL 551

