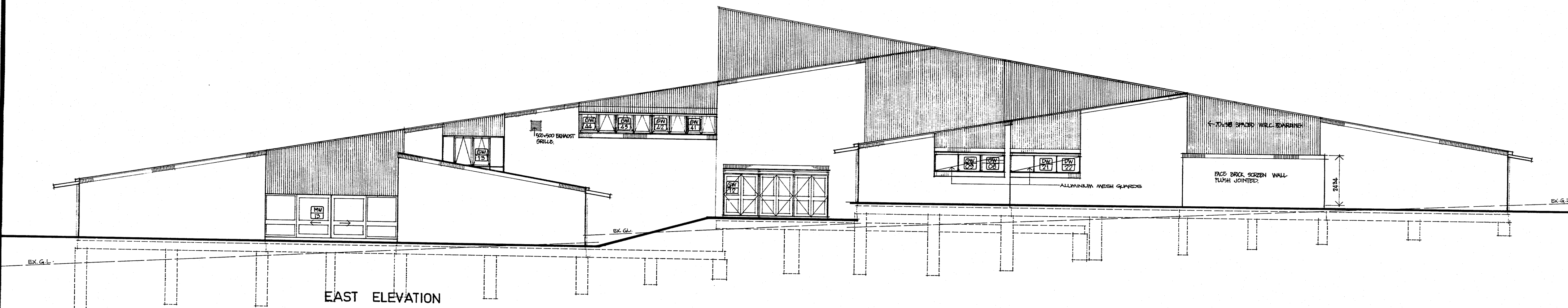
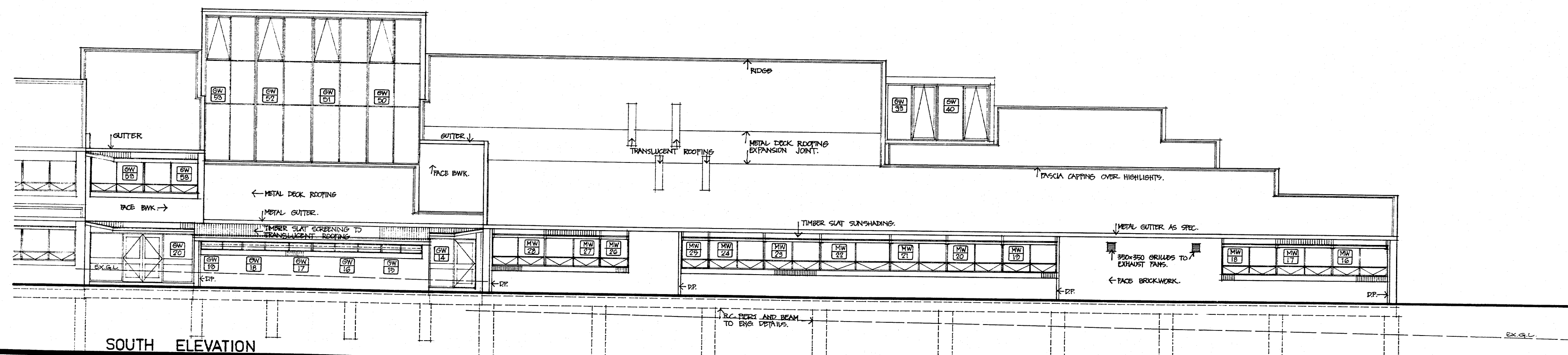


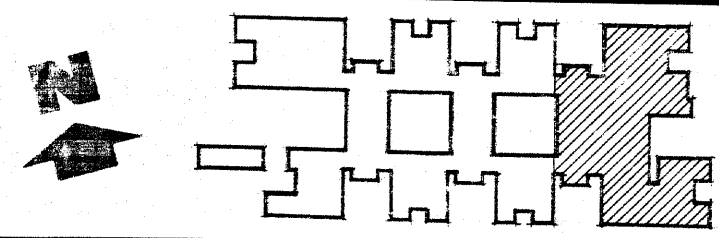
NORTH ELEVATION



EAST ELEVATION



SOUTH ELEVATION



DEPARTMENT OF PUBLIC WORKS  
NEW SOUTH WALES  
W. K. PILZ  
DIRECTOR OF PUBLIC WORKS

C. P. WEATHERBURN  
GOVERNMENT ARCHITECT

DESIGN BY GOVERNMENT ARCHITECT

CONSULTING ARCHITECT  
IAN REEER ASSOCIATES

CONSULTING ENGINEER - STRUCTURAL  
BOND, JAMES, LARON PTY. LTD.

CONSULTING ENGINEER - ELECTRICAL  
DEPARTMENT OF PUBLIC WORKS

CONSULTING ENGINEER - MECHANICAL  
DEPARTMENT OF PUBLIC WORKS

CONSULTING ENGINEER - HYDRAULIC  
LEDINGHAM, HENSBY & PARTNERS PTY. LTD.

**KELSO HIGH SCHOOL  
NEW SCHOOL**

BOYD ROAD,  
KELSO, BATHURST

**BLOCK D, G & M  
ELEVATIONS**

PLAN ROOM  
NUMBER SB2503/13

NUMBER  
IN SET 199

SHEET  
NUMBER 13

SCALE 1 : 100

ROLL 55!

300mm ON ORIGINAL

300 MMS ON ORIGINAL SCALE