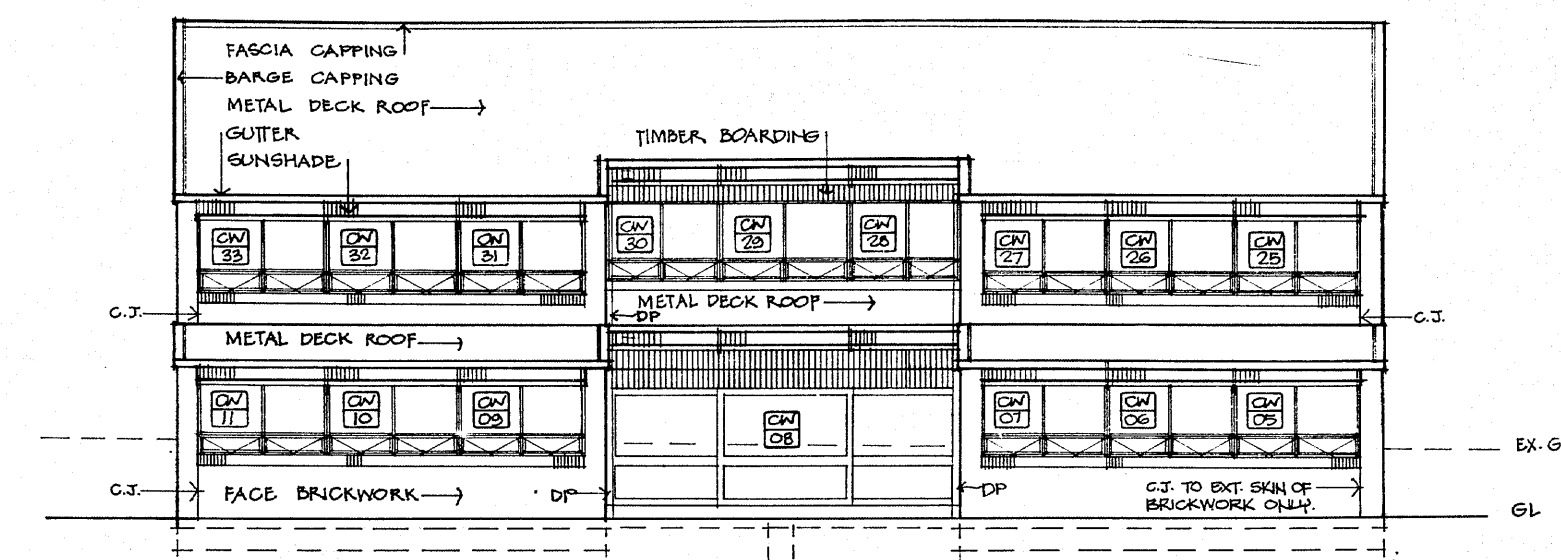
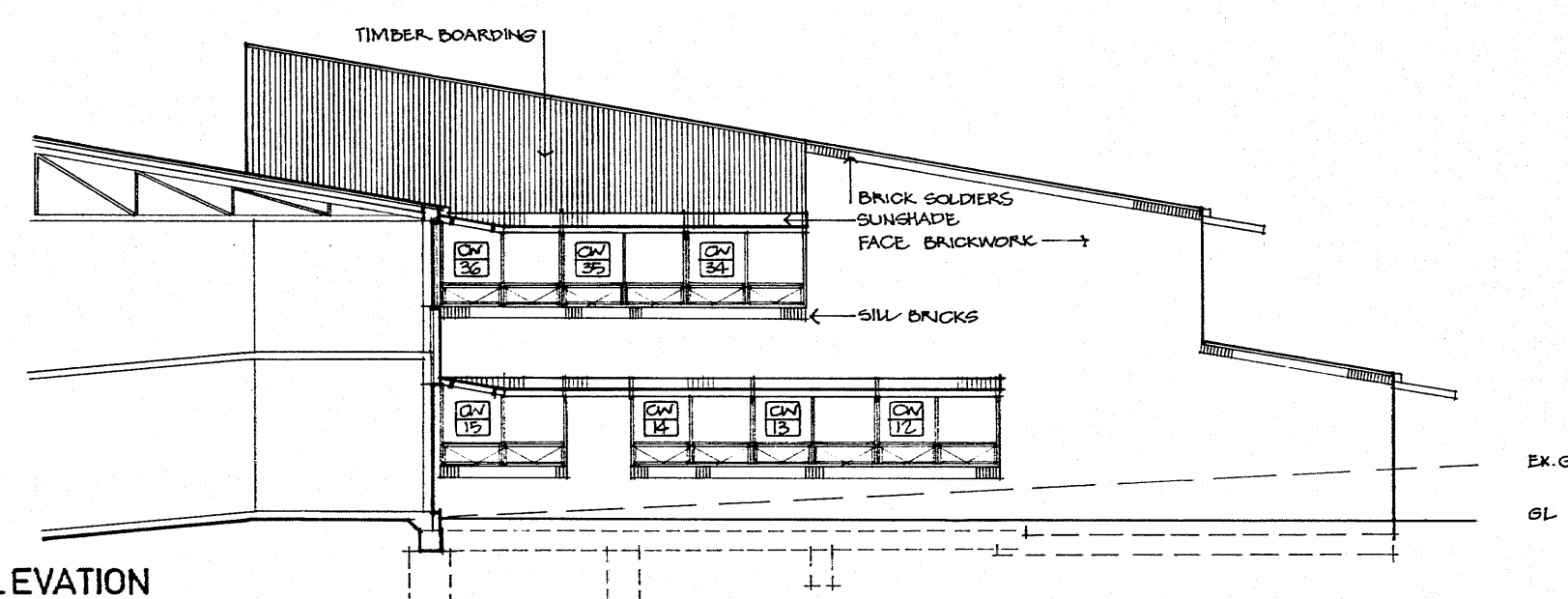


ROOF PLAN

NORTH ELEVATION

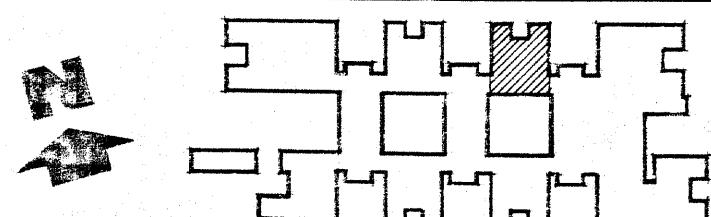
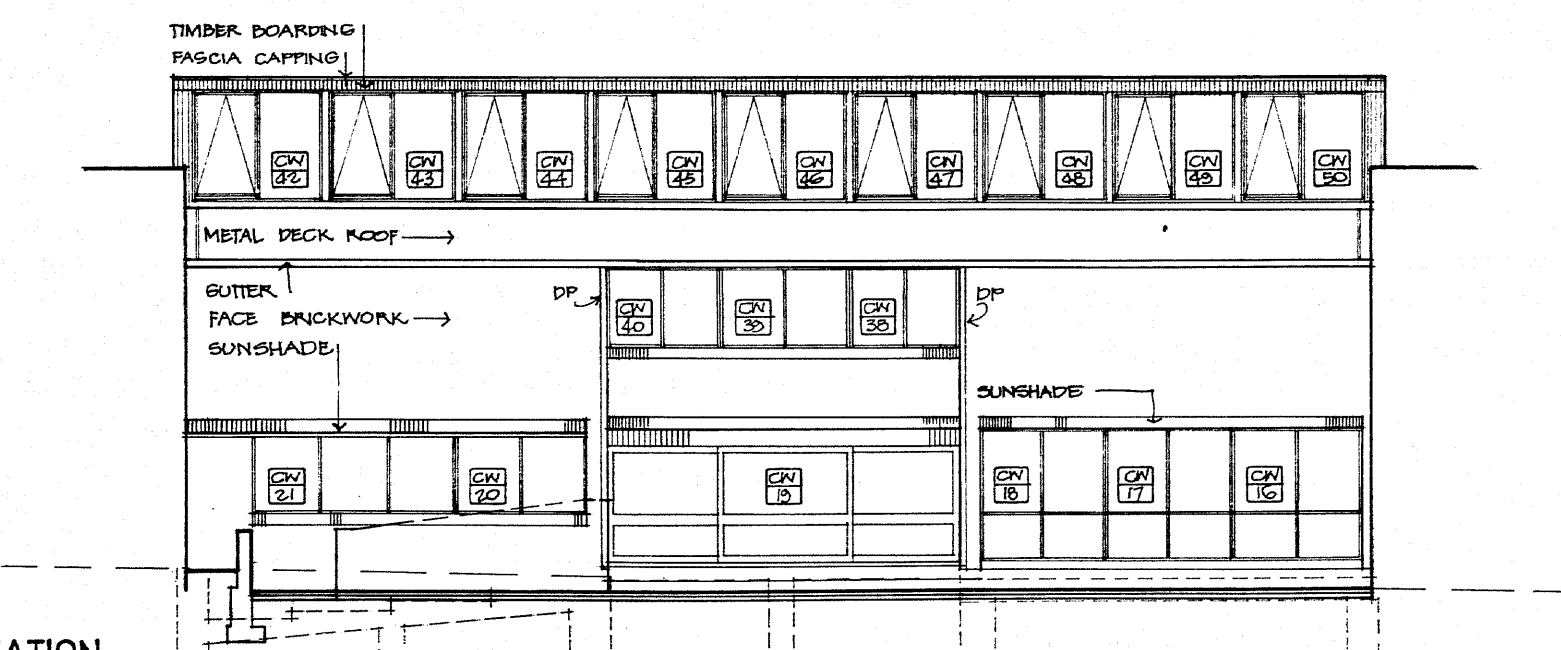


WEST ELEVATION



EAST ELEVATION

SOUTH ELEVATION



DEPARTMENT OF PUBLIC WORKS
NEW SOUTH WALES
W. K. PILZ
DIRECTOR OF PUBLIC WORKS

C. P. WEATHERBURN
GOVERNMENT ARCHITECT

DESIGN BY GOVERNMENT ARCHITECT

CONSULTING ARCHITECT
IAN REELER ASSOCIATES

CONSULTING ENGINEER - STRUCTURAL
ROND, JAMES, LARON PTY. LTD.

CONSULTING ENGINEER - ELECTRICAL
DEPARTMENT OF PUBLIC WORKS

CONSULTING ENGINEER - MECHANICAL
DEPARTMENT OF PUBLIC WORKS

CONSULTING ENGINEER - HYDRAULIC
LEDINGHAM, HENSBY & PARTNERS PTY. LTD.

**KELSO HIGH SCHOOL
NEW SCHOOL**

BOYD ROAD,
KELSO, BATHURST

**BLOCK C
ROOF PLAN & ELEVATIONS**

PLAN ROOM
NUMBER SB2503/10

NUMBER
IN SET 199

SHEET
NUMBER 10

SCALE 1:100

300mm ON ORIGINAL

ROLL 551

300 MMS ON ORIGINAL SCALE