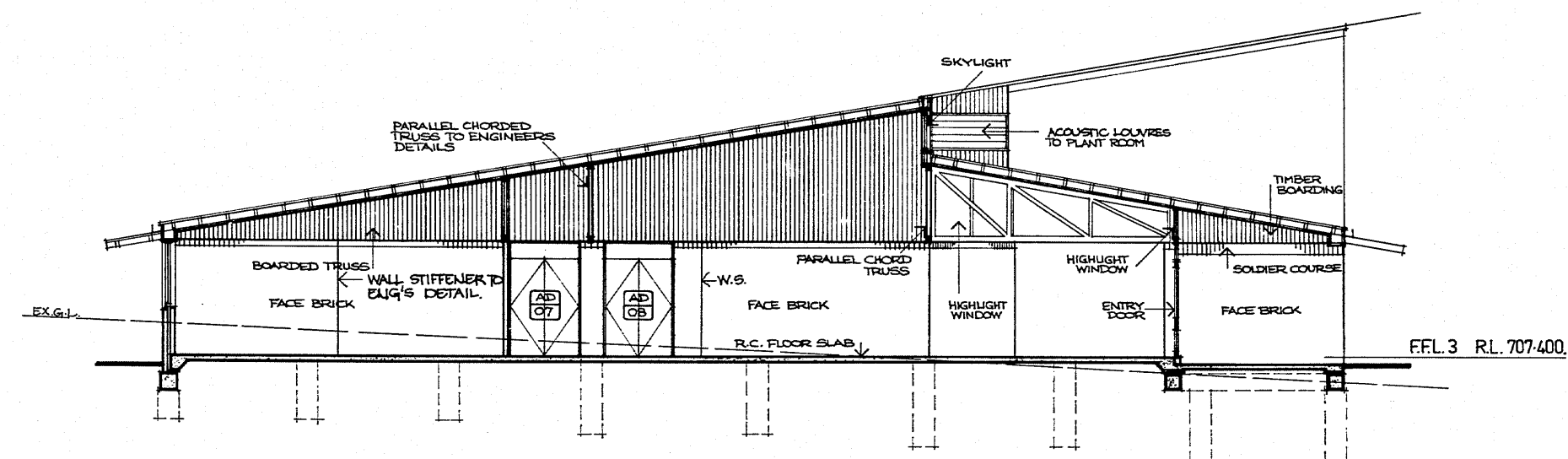
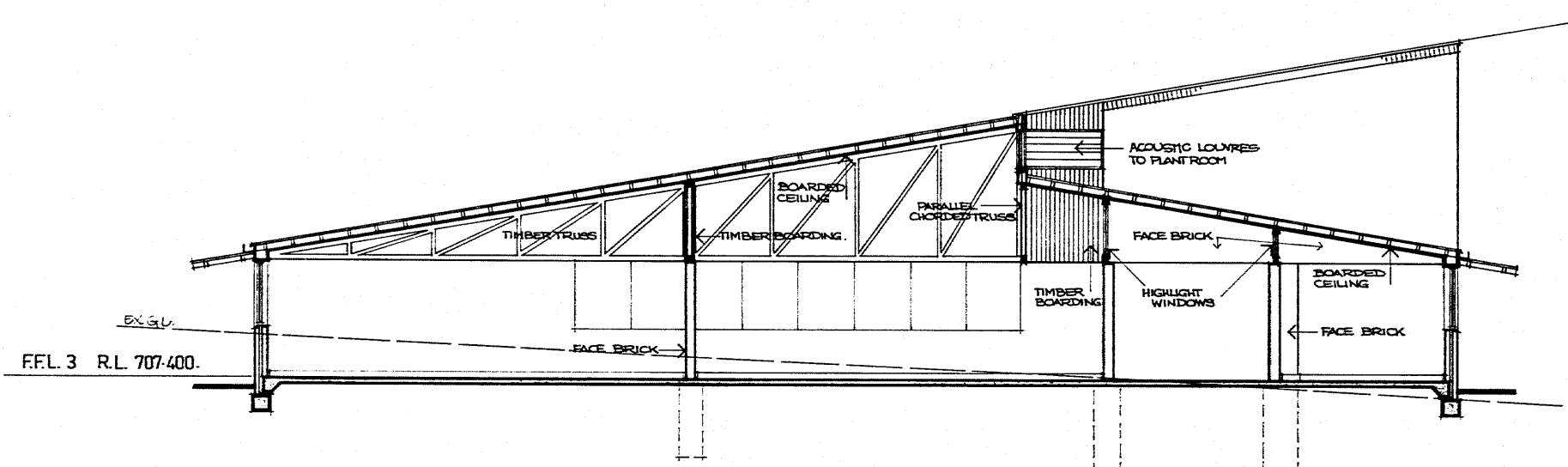


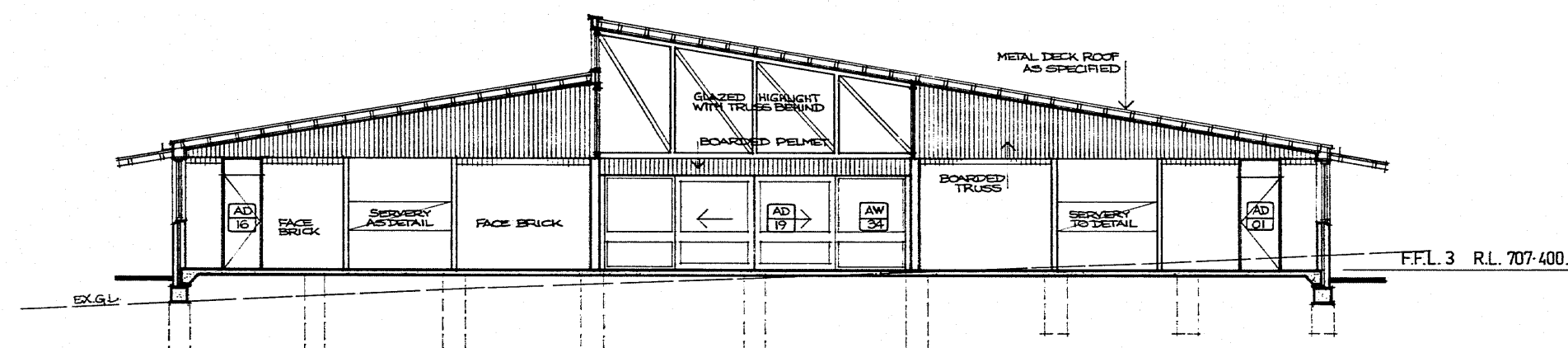
SECTION 1-1



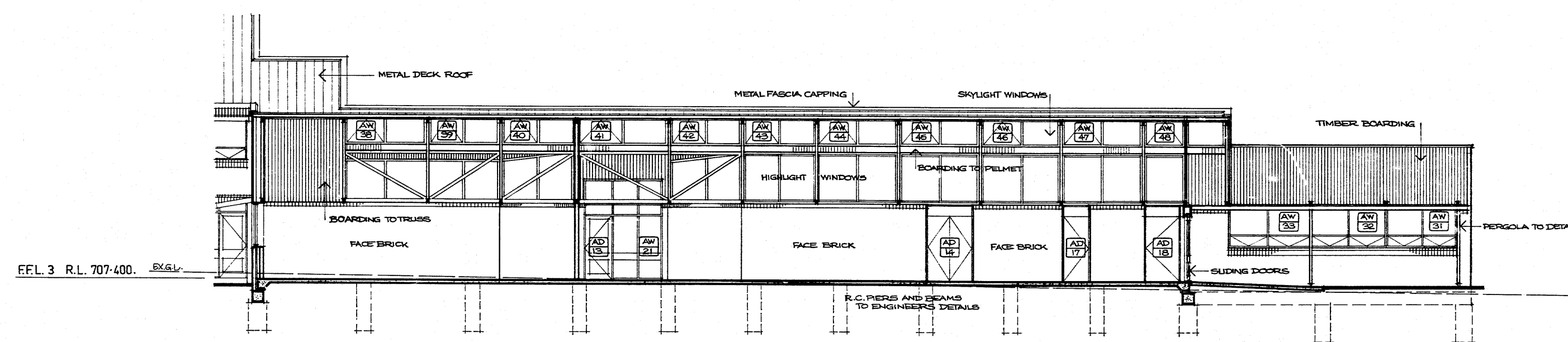
SECTION 3-3.



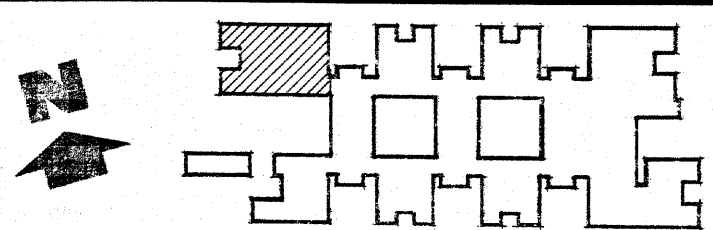
SECTION 2-2



SECTION 4-4



SECTION 5-5



DEPARTMENT OF PUBLIC WORKS  
NEW SOUTH WALES  
W. K. PILZ DIRECTOR OF PUBLIC WORKS  
*C. P. Weatherburn*  
C. P. WEATHERBURN GOVERNMENT ARCHITECT

DESIGN BY GOVERNMENT ARCHITECT  
CONSULTING ARCHITECT  
IAN REEER ASSOCIATES  
CONSULTING ENGINEER - STRUCTURAL  
BOND, JAMES, LARON PTY. LTD.

CONSULTING ENGINEER - ELECTRICAL  
DEPARTMENT OF PUBLIC WORKS  
CONSULTING ENGINEER - MECHANICAL  
DEPARTMENT OF PUBLIC WORKS  
CONSULTING ENGINEER - HYDRAULIC  
LEDINGHAM, HENSBY & PARTNERS PTY. LTD.

**KELSO HIGH SCHOOL  
NEW SCHOOL**  
BOYD ROAD,  
KELSO, BATHURST  
**BLOCK A  
SECTIONS**

PLAN ROOM NUMBER SB2503/5  
NUMBER IN SET 199 SHEET NUMBER 5  
SCALES 1:100

300mm ON ORIGINAL

ROLL 551

300 MMS ON ORIGINAL SCALE