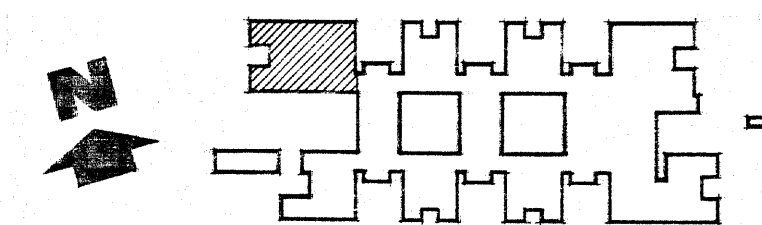


DA DIMENSIONS REFER TO HYDRAULIC DRAWINGS



DEPARTMENT OF PUBLIC WORKS
 NEW SOUTH WALES
 W. K. PILZ DIRECTOR OF PUBLIC WORKS
C. P. Weatherburn
 C. P. WEATHERBURN GOVERNMENT ARCHITECT

DESIGN BY GOVERNMENT ARCHITECT
 CONSULTING ARCHITECT
 IAN REBLER ASSOCIATES
 CONSULTING ENGINEER - STRUCTURAL
 BOND, JAMES, LARON PTY. LTD.

CONSULTING ENGINEER - ELECTRICAL
 DEPARTMENT OF PUBLIC WORKS
 CONSULTING ENGINEER - MECHANICAL
 DEPARTMENT OF PUBLIC WORKS
 CONSULTING ENGINEER - HYDRAULIC
 LEDINGHAM, HENSBY & PARTNERS PTY. LTD.

**KELSO HIGH SCHOOL
 NEW SCHOOL**
 BOYD ROAD,
 KELSO, BATHURST
**BLOCK A
 FLOOR PLAN LEVEL 3**

PLAN ROOM NUMBER	SB2503/2	
NUMBER IN SET	199	SHEET NUMBER 2
SCALES 1:100		

300mm ON ORIGINAL



ROLL 551