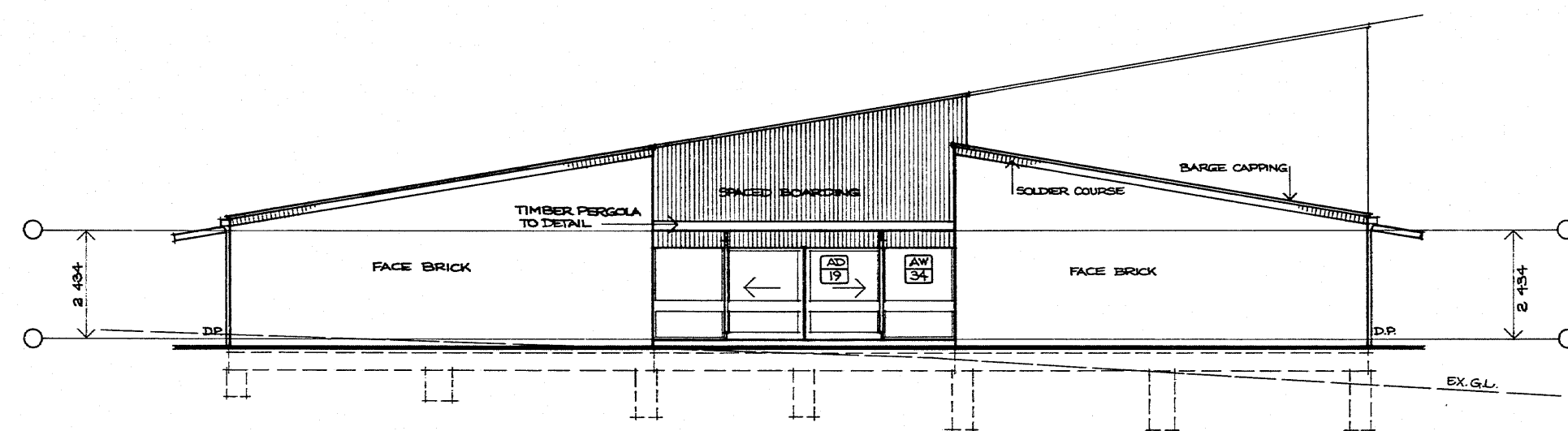
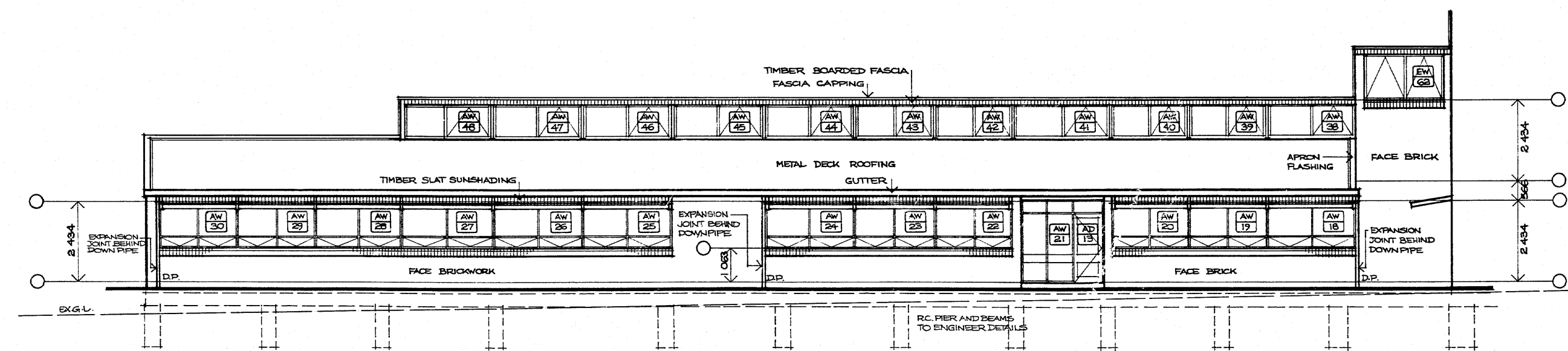


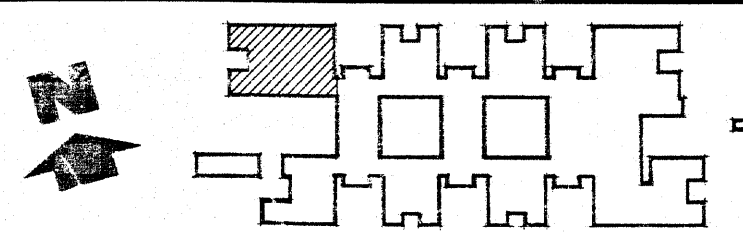
NORTH ELEVATION



WEST ELEVATION



SOUTH ELEVATION



DEPARTMENT OF PUBLIC WORKS
NEW SOUTH WALES
W. K. PILZ
DIRECTOR OF PUBLIC WORKS

C. P. Weatherburn
6.9.76

C. P. WEATHERBURN
GOVERNMENT ARCHITECT

DESIGN BY GOVERNMENT ARCHITECT

CONSULTING ARCHITECT
IAN REEHER ASSOCIATES

CONSULTING ENGINEER - STRUCTURAL
BOND, JAMES, LARON PTY. LTD.

CONSULTING ENGINEER - ELECTRICAL
DEPARTMENT OF PUBLIC WORKS

CONSULTING ENGINEER - MECHANICAL
DEPARTMENT OF PUBLIC WORKS

CONSULTING ENGINEER - HYDRAULIC
LEDINGHAM, HENSBY & PARTNERS PTY. LTD.

**KELSO HIGH SCHOOL
NEW SCHOOL**

BOYD ROAD,
KELSO, BATHURST

**BLOCK A
ELEVATIONS**

PLAN ROOM
NUMBER SB2503/4

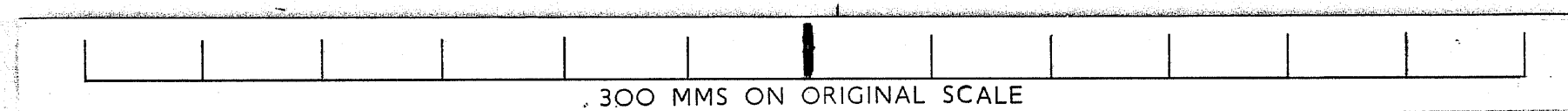
NUMBER
IN SET 199

SHEET
NUMBER 4

SCALES 1:100

300mm ON ORIGINAL

ROLL 551



300 MMS ON ORIGINAL SCALE